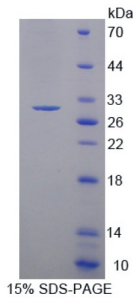


## Human Myosin Light Chain Kinase 3 (MYLK3) Protein

Catalogue No.: abx166477



SDS-PAGE analysis of recombinant Human Myosin Light Chain Kinase 3 Protein.

Human Myosin Light Chain Kinase 3 Protein is a recombinant Human protein expressed in *E. coli*.

<b>Target:</b>	Myosin Light Chain Kinase 3 (MYLK3)
<b>Origin:</b>	Human
<b>Expression:</b>	Recombinant
<b>Tested Applications:</b>	WB, SDS-PAGE
<b>Host:</b>	<i>E. coli</i>
<b>Conjugation:</b>	Unconjugated
<b>Form:</b>	Lyophilized
<b>Purity:</b>	> 97%
<b>Reconstitution:</b>	Reconstitute in ddH <sub>2</sub> O to a concentration up to 0.1 mg/ml. Do not vortex.
<b>Storage:</b>	Store at 2-8 °C for up to one month. Store at -80 °C for up to one year. Avoid repeated freeze/thaw cycles.
<b>UniProt Primary AC:</b>	Q32MK0 ( <a href="#">UniProt</a> , <a href="#">ExPASy</a> )
<b>Gene Symbol:</b>	MYLK3
<b>GeneID:</b>	<a href="#">91807</a>
<b>OMIM:</b>	<a href="#">612147</a>
<b>HGNC:</b>	29826

# Datasheet

Version: 2.0.0  
Revision date: 06 Feb 2025



**KEGG:** hsa:91807

**Ensembl:** ENSG00000140795

**Molecular Weight:** Calculated MW: 30.5 kDa  
Observed MW (SDS-PAGE): 29 kDa

**Sequence Fragment:** Glu555-Ser786

**Sequence:** EDVKNE INIMNQLSHV NLIQLYDAFE SKHSCTLVME YVDGGELFDR ITDEKYHLTE LDVVLFTTRQI CE  
GVHYLHQH YILHLDLKPE NILCVNQTGH QIKIIDFGLA RRYKPREKLK VNFGTPEFLA PEVVNYEFVS  
FPTDMWSVGV ITYMLLSGLS PFLGETDAET MNFIVNCSWD FDADTFEGLS EEAKDFVSRL  
LVKEKSCRM  
S ATQCLKHEWL NNLPAKASRS KTRLKS

**Tag:** N-terminal His tag

**Buffer:** Prior to lyophilization: 100 mM NaHCO<sub>3</sub>, 500 mM NaCl, pH 8.3, containing 0.01% Sarcosyl, 5% Trehalose.

**Activity:** Not tested

**Concentration:** Prior to lyophilization: 200 µg/ml

**Note:** This product is for research use only.  
Not for human consumption, cosmetic, therapeutic or diagnostic use.

For Reference Only