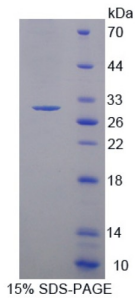


# Datasheet

Version: 3.0.0  
Revision date: 13 Mar 2025

## Human Myosin Light Chain Kinase 3 (MYLK3) Protein

Catalogue No.: abx166477



SDS-PAGE analysis of recombinant Human Myosin Light Chain Kinase 3 Protein.

Human Myosin Light Chain Kinase 3 Protein is a recombinant Human protein expressed in *E. coli*.

**Target:** Myosin Light Chain Kinase 3 (MYLK3)

**Origin:** Human

**Expression:** Recombinant

**Tested Applications:** WB, SDS-PAGE

**Host:** *E. coli*

**Conjugation:** Unconjugated

**Form:** Lyophilized

**Purity:** > 97%

**Reconstitution:** Reconstitute in ddH<sub>2</sub>O to a concentration up to 0.1 mg/ml. Do not vortex.

**Storage:** Store at 2-8 °C for up to one month. Store at -80 °C for up to one year. Avoid repeated freeze/thaw cycles.

**UniProt Primary AC:** Q32MK0 ([UniProt](#), [ExPASy](#))

**Gene Symbol:** MYLK3

**GeneID:** [91807](#)

**OMIM:** [612147](#)

**HGNC:** 29826

# Datasheet

Version: 3.0.0  
Revision date: 13 Mar 2025



**KEGG:** hsa:91807

**Ensembl:** ENSG00000140795

**Molecular Weight:** Calculated MW: 30.5 kDa  
Observed MW (SDS-PAGE): 29 kDa

**Sequence Fragment:** Glu555-Ser786

**Sequence:** EDVKNE INIMNQLSHV NLIQLYDAFE SKHSCTLVME YVDGGELFDR ITDEKYHLTE LDVVLFTTRQI CE  
GVHYLHQH YILHLDLKPE NILCVNQTGH QIKIIDFGLA RRYKPREKLL VNFGTPEFLA PEVVNYEFVS  
FPTDMWSVGV ITYMLLSGLS PFLGETDAET MNFIVNCSWD FDADTFEGLS EEAKDFVSRL  
LVKEKSCRM  
S ATQCLKHEWL NNLPAKASRS KTRLKS

**Tag:** N-terminal His tag

**Buffer:** Prior to lyophilization: 100 mM NaHCO<sub>3</sub>, 500 mM NaCl, pH 8.3, containing 0.01% Sarcosyl, 5% Trehalose.

**Activity:** Not tested

**Concentration:** Prior to lyophilization: 200 µg/ml

**Note:** THIS PRODUCT IS FOR RESEARCH USE ONLY. NOT FOR USE IN DIAGNOSTIC, THERAPEUTIC OR COSMETIC PROCEDURES. NOT FOR HUMAN OR ANIMAL CONSUMPTION.

For Reference Only