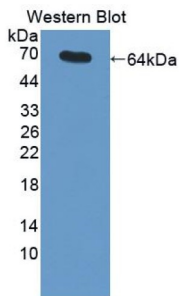
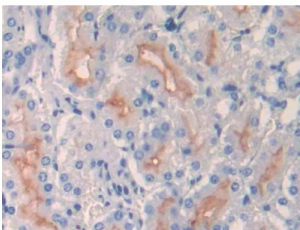


Neprilysin / NEP (MME) Antibody

Catalogue No.: abx129475



Western blot analysis of the recombinant protein.



IHC-P analysis of Mouse Kidney Tissue, with DAB staining.

Neprilysin Antibody is a Rabbit Polyclonal antibody against Neprilysin.

Target:	Neprilysin / NEP (MME)
Clonality:	Polyclonal
Reactivity:	Mouse
Tested Applications:	WB, IHC, IF/ICC
Host:	Rabbit
Recommended dilutions:	WB: 0.01-2 µg/ml, IHC: 5-20 µg/ml, IF/ICC: 5-20 µg/ml. Optimal dilutions/concentrations should be determined by the end user.
Conjugation:	Unconjugated
Immunogen:	NEP (Leu455-Trp750)
Form:	Liquid
Purification:	Purified by antigen-specific affinity chromatography, followed by Protein A affinity chromatography.
Storage:	Aliquot and store at -20°C. Avoid repeated freeze/thaw cycles.

Datasheet

Version: 1.0.0
Revision date: 14 Jan 2025



UniProt Primary AC: Q61391 ([UniProt](#), [ExpASY](#))

KEGG: mmu:17380

String: [10090.ENSMUSP00000029400](#)

Buffer: 0.01 M PBS, pH 7.4, containing 0.05% Proclin-300, 50% glycerol.

Note: This product is for research use only.

For Reference Only