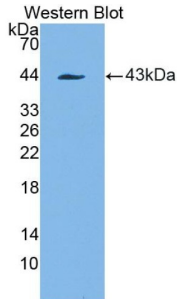
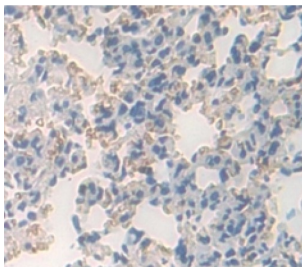


Platelet Derived Growth Factor Receptor Like Protein (PDGFRL) Antibody

Catalogue No.: abx129907



Western blot analysis of the recombinant protein.



IHC-P analysis of Mouse Tissue, with DAB staining.

Platelet Derived Growth Factor Receptor Like Protein Antibody is a Rabbit Polyclonal against Platelet Derived Growth Factor Receptor Like Protein.

Target: Platelet Derived Growth Factor Receptor Like Protein (PDGFRL)

Clonality: Polyclonal

Reactivity: Mouse

Tested Applications: WB, IHC, IF/ICC

Host: Rabbit

Recommended dilutions: WB: 0.01-2 µg/ml, IHC: 5-20 µg/ml, IF/ICC: 5-20 µg/ml. Optimal dilutions/concentrations should be determined by the end user.

Conjugation: Unconjugated

Immunogen: PDGFRL (Gln22-Ser375)

Form: Liquid

Purification: Purified by antigen-specific affinity chromatography, followed by Protein A affinity chromatography.

Datasheet

Version: 3.0.0
Revision date: 10 Mar 2025



Storage: Aliquot and store at -20°C. Avoid repeated freeze/thaw cycles.

UniProt Primary AC: Q6PE55 ([UniProt](#), [ExpASY](#))

KEGG: mmu:68797

String: [10090.ENSMUSP00000034004](#)

Buffer: 0.01 M PBS, pH 7.4, containing 0.05% Proclin-300, 50% glycerol.

Note: THIS PRODUCT IS FOR RESEARCH USE ONLY. NOT FOR USE IN DIAGNOSTIC, THERAPEUTIC OR COSMETIC PROCEDURES. NOT FOR HUMAN OR ANIMAL CONSUMPTION.

For Reference Only