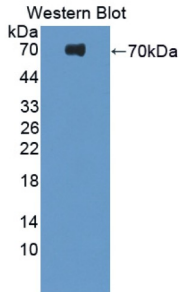
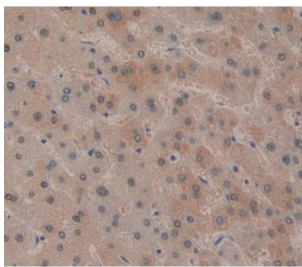


Platelet Derived Growth Factor Receptor Like Protein (PDGFRL) Antibody

Catalogue No.: abx128231



Western blot analysis of the recombinant protein.



IHC-P analysis of Human Tissue, with DAB staining.

Platelet Derived Growth Factor Receptor Like Protein Antibody is a Rabbit Polyclonal against Platelet Derived Growth Factor Receptor Like Protein.

Target: Platelet Derived Growth Factor Receptor Like Protein (PDGFRL)

Clonality: Polyclonal

Reactivity: Human

Tested Applications: WB, IHC, IF/ICC

Host: Rabbit

Recommended dilutions: WB: 0.01-2 µg/ml, IHC: 5-20 µg/ml, IF/ICC: 5-20 µg/ml. Optimal dilutions/concentrations should be determined by the end user.

Conjugation: Unconjugated

Immunogen: PDGFRL (Gln22-Ser375)

Form: Liquid

Purification: Purified by antigen-specific affinity chromatography, followed by Protein A affinity chromatography.

Datasheet

Version: 2.0.0

Revision date: 10 Feb 2025



Storage: Aliquot and store at -20°C. Avoid repeated freeze/thaw cycles.

UniProt Primary AC: Q15198 ([UniProt](#), [ExPASy](#))

KEGG: hsa:5157

String: [9606.ENSP00000444211](#)

Buffer: 0.01 M PBS, pH 7.4, containing 0.05% Proclin-300, 50% glycerol.

Note: This product is for research use only.

For Reference Only