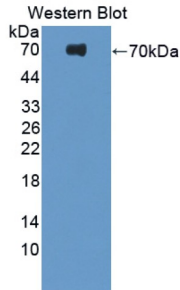
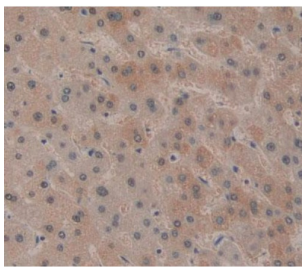


# Platelet Derived Growth Factor Receptor Like Protein (PDGFRL) Antibody

Catalogue No.: abx128231



Western blot analysis of the recombinant protein.



IHC-P analysis of Human Tissue, with DAB staining.

Platelet Derived Growth Factor Receptor Like Protein Antibody is a Rabbit Polyclonal against Platelet Derived Growth Factor Receptor Like Protein.

**Target:** Platelet Derived Growth Factor Receptor Like Protein (PDGFRL)

**Clonality:** Polyclonal

**Reactivity:** Human

**Tested Applications:** WB, IHC, IF/ICC

**Host:** Rabbit

**Recommended dilutions:** WB: 0.01-2 µg/ml, IHC: 5-20 µg/ml, IF/ICC: 5-20 µg/ml. Optimal dilutions/concentrations should be determined by the end user.

**Conjugation:** Unconjugated

**Immunogen:** PDGFRL (Gln22-Ser375)

**Form:** Liquid

**Purification:** Purified by antigen-specific affinity chromatography, followed by Protein A affinity chromatography.

# Datasheet

Version: 3.0.0  
Revision date: 13 Mar 2025



**Storage:** Aliquot and store at -20°C. Avoid repeated freeze/thaw cycles.

**UniProt Primary AC:** Q15198 ([UniProt](#), [ExPASy](#))

**KEGG:** hsa:5157

**String:** [9606.ENSP00000444211](#)

**Buffer:** 0.01 M PBS, pH 7.4, containing 0.05% Proclin-300, 50% glycerol.

**Note:** THIS PRODUCT IS FOR RESEARCH USE ONLY. NOT FOR USE IN DIAGNOSTIC, THERAPEUTIC OR COSMETIC PROCEDURES. NOT FOR HUMAN OR ANIMAL CONSUMPTION.

For Reference Only