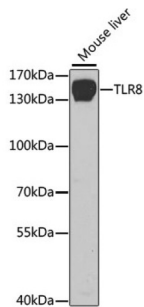
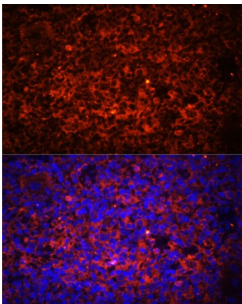


## Toll Like Receptor 8 (TLR8) Antibody

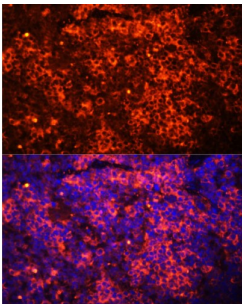
Catalogue No.: abx001263



Western blot analysis of extracts of Mouse liver using TLR8 Antibody (1/1000 dilution).



Immunofluorescence analysis of Rat spleen using TLR8 Antibody (1/100 dilution, 40x lens).  
Blue: DAPI for nuclear staining.



Immunofluorescence analysis of Mouse spleen using TLR8 Antibody (1/100 dilution, 40x lens).  
Blue: DAPI for nuclear staining.

TLR8 Antibody is a Rabbit Polyclonal antibody against TLR8. The Toll-like Receptors (TLR) are a family of human receptors that share homology with the *Drosophila* Toll Receptors, which are involved in mediating dorsoventral polarization in developing *Drosophila* embryos and participate in host immunity. The TLR family members are characterized by a highly conserved Toll homology (TH) domain, which is essential for Toll-induced signal transductions. TLRs are type I transmembrane receptors that contain an extracellular domain consisting of several leucine-rich regions and a single cytoplasmic Toll/IL-1R like domain. Three TLR family members, TLR7, TLR8 and TLR9, belong to a subfamily of TLRs which are differentially expressed. TLR7 is expressed in lung, placenta and spleen. TLR8 is expressed in lung and peripheral blood leukocytes, and TLR9 is predominantly expressed in spleen, lymph nodes, bone marrow and peripheral blood leukocytes. TLR7, TLR8 and TLR9 stimulate the NF $\kappa$ B signaling pathway, suggesting that they play a role in the immune response.

**Target:** Toll Like Receptor 8 (TLR8)

**Clonality:** Polyclonal

**Reactivity:** Human, Mouse, Rat

**Tested Applications:** WB, IF/ICC

# Datasheet

Version: 3.0.0  
Revision date: 03 Feb 2025



<b>Host:</b>	Rabbit
<b>Recommended dilutions:</b>	WB: 1/500 - 1/2000, IF/ICC: 1/50 - 1/200. Optimal dilutions/concentrations should be determined by the end user.
<b>Conjugation:</b>	Unconjugated
<b>Immunogen:</b>	Recombinant fusion protein corresponding to human TLR8
<b>Isotype:</b>	IgG
<b>Form:</b>	Liquid
<b>Purification:</b>	Purified by affinity chromatography.
<b>Storage:</b>	Aliquot and store at -20°C. Avoid repeated freeze/thaw cycles.
<b>UniProt Primary AC:</b>	Q9NR97 ( <a href="#">UniProt</a> , <a href="#">ExPASy</a> )
<b>Gene Symbol:</b>	TLR8
<b>GeneID:</b>	<a href="#">51311</a>
<b>NCBI Accession:</b>	NP_619542.1
<b>String:</b>	<a href="#">9606.ENSP00000312082</a>
<b>Molecular Weight:</b>	Calculated MW: 119 kDa/121 kDa Observed MW: 150 kDa
<b>Buffer:</b>	PBS, pH 7.3, containing 0.02% sodium azide, 50% glycerol.
<b>Concentration:</b>	1 mg/ml
<b>Note:</b>	This product is for research use only.