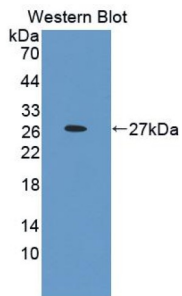
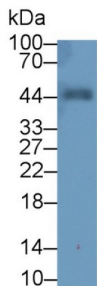


## Programmed Cell Death Protein 1 Ligand 2 (PDCD1LG2) Antibody

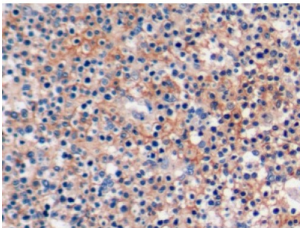
Catalogue No.: abx128134



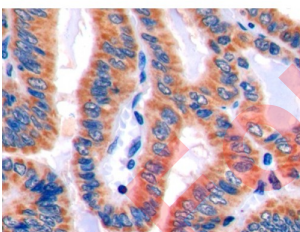
Western blot analysis of recombinant Human PDCD1LG2.



Western blot analysis of Human Urine, using Rabbit Anti-Human PDCD1LG2 Antibody (2 µg/ml) and HRP-conjugated Goat Anti-Rabbit antibody ([abx400043](#), 0.2 µg/ml).



IHC-P analysis of Human Tonsil Tissue, with DAB staining using Rabbit Anti-Human PDCD1LG2 Antibody (20 µg/ml) and HRP-conjugated Goat Anti-Rabbit antibody ([abx400043](#), 2 µg/ml).



IHC-P analysis of Human Thyroid Cancer Tissue, with DAB staining using Rabbit Anti-Human PDCD1LG2 Antibody (20 µg/ml) and HRP-conjugated Goat Anti-Rabbit antibody ([abx400043](#), 2 µg/ml).

Programmed Cell Death Protein 1 Ligand 2 Antibody is a Rabbit Polyclonal against Programmed Cell Death Protein 1 Ligand 2.

**Target:** Programmed Cell Death Protein 1 Ligand 2 (PDCD1LG2)

**Clonality:** Polyclonal

**Reactivity:** Human

# Datasheet

Version: 4.0.0  
Revision date: 15 Jan 2025



<b>Tested Applications:</b>	WB, IHC, IF/ICC
<b>Host:</b>	Rabbit
<b>Recommended dilutions:</b>	WB: 0.01-2 µg/ml, IHC: 5-20 µg/ml, IF/ICC: 5-20 µg/ml. Optimal dilutions/concentrations should be determined by the end user.
<b>Conjugation:</b>	Unconjugated
<b>Immunogen:</b>	<a href="#">abx166054</a> - Recombinant PDCD1LG2 (Glu33-Phe236) expressed in E. coli
<b>Form:</b>	Liquid
<b>Purification:</b>	Purified by antigen-specific affinity chromatography, followed by Protein A affinity chromatography.
<b>Storage:</b>	Aliquot and store at -20°C. Avoid repeated freeze/thaw cycles.
<b>UniProt Primary AC:</b>	Q9BQ51 ( <a href="#">UniProt</a> , <a href="#">ExPASy</a> )
<b>String:</b>	<a href="#">9606.ENSP00000380855</a>
<b>Buffer:</b>	0.01 M PBS, pH 7.4, containing 0.05% Proclin-300, 50% glycerol.
<b>Concentration:</b>	1 mg/ml
<b>Note:</b>	This product is for research use only.

For Reference Only