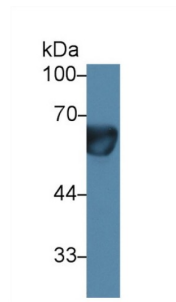
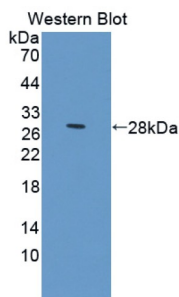


Prolactin Receptor (PRLR) Antibody

Catalogue No.: abx104863



Western blot analysis of Cow Serum, using Cow PRLR Antibody (2 µg/ml) and HRP-conjugated Goat Anti-Rabbit antibody (abx400043, 0.2 µg/ml).



Western blot analysis of the recombinant protein.

Prolactin Receptor Antibody is a Rabbit Polyclonal against Prolactin Receptor.

Target:	Prolactin Receptor (PRLR)
Clonality:	Polyclonal
Reactivity:	Cow
Tested Applications:	WB, IHC, IF/ICC
Host:	Rabbit
Recommended dilutions:	WB: 0.5-2 µg/ml, IHC: 5-20 µg/ml, IF/ICC: 5-20 µg/ml. Optimal dilutions/concentrations should be determined by the end user.
Conjugation:	Unconjugated
Immunogen:	PRLR (Gln25-Asp234)
Form:	Liquid
Purification:	Purified by antigen-specific affinity chromatography, followed by Protein A affinity chromatography.
Storage:	Aliquot and store at -20°C. Avoid repeated freeze/thaw cycles.

Datasheet

Version: 2.0.0

Revision date: 23 Dec 2024



Buffer: 0.01 M PBS, pH 7.4, containing 0.05% Proclin-300, 50% glycerol.

Note: This product is for research use only.

For Reference Only