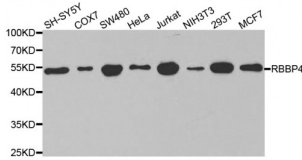
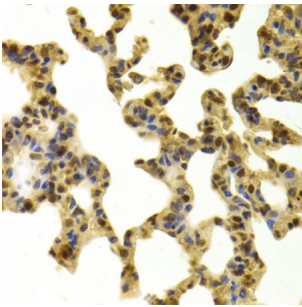


## Histone-Binding Protein RBBP4 (RBBP4) Antibody

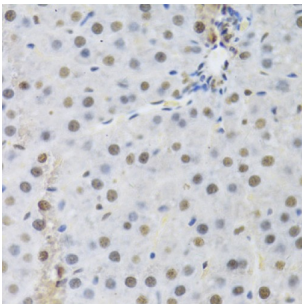
Catalogue No.: abx001264



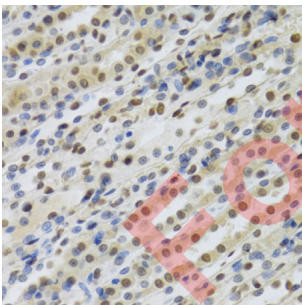
Western blot analysis of extracts of various cell lines, using RBBP4 antibody (abx001264) at 1/1000 dilution.



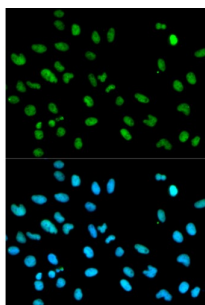
Immunohistochemistry of paraffin-embedded mouse lung using RBBP4 Antibody (abx001264) at dilution of 1/100 (40x lens).



Immunohistochemistry of paraffin-embedded rat liver using RBBP4 Antibody (abx001264) at dilution of 1/100 (40x lens).



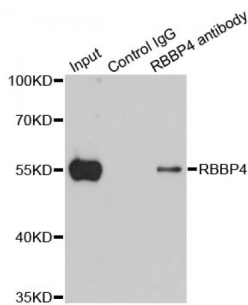
Immunohistochemistry of paraffin-embedded rat kidney using RBBP4 Antibody (abx001264) at dilution of 1/100 (40x lens).



Immunofluorescence analysis of MCF-7 cells using RBBP4 antibody (abx001264). Blue: DAPI for nuclear staining.

# Datasheet

Version: 2.0.0  
Revision date: 01 Sep 2024



Immunoprecipitation analysis of 200 µg extracts of 293T cells using 1 µg RBBP4 antibody (abx001264). Western blot was performed from the immunoprecipitate using RBBP4 antibody (abx001264) at a dilution of 1/1000.

RBBP4 Antibody is a Rabbit Polyclonal antibody against RBBP4. This gene encodes a ubiquitously expressed nuclear protein which belongs to a highly conserved subfamily of WD-repeat proteins. It is present in protein complexes involved in histone acetylation and chromatin assembly. It is part of the Mi-2 complex which has been implicated in chromatin remodeling and transcriptional repression associated with histone deacetylation. This encoded protein is also part of co-repressor complexes, which is an integral component of transcriptional silencing. It is found among several cellular proteins that bind directly to retinoblastoma protein to regulate cell proliferation. This protein also seems to be involved in transcriptional repression of E2F-responsive genes. Three transcript variants encoding different isoforms have been found for this gene.

<b>Target:</b>	Histone-Binding Protein RBBP4 (RBBP4)
<b>Clonality:</b>	Polyclonal
<b>Reactivity:</b>	Human, Mouse, Rat
<b>Tested Applications:</b>	WB, IF/ICC, IP
<b>Host:</b>	Rabbit
<b>Recommended dilutions:</b>	WB: 1/500 - 1/2000, IF/ICC: 1/50 - 1/200, IP: 0.5-4 µg/200-400 µg whole cell extracts, ChIP: 5 µg/10-15 µg Chromatin. Optimal dilutions/concentrations should be determined by the end user.
<b>Conjugation:</b>	Unconjugated
<b>Immunogen:</b>	Recombinant fusion protein containing a sequence corresponding to amino acids 1-425 of human RBBP4.
<b>Isotype:</b>	IgG
<b>Form:</b>	Liquid
<b>Purification:</b>	Purified by affinity chromatography.
<b>Storage:</b>	Aliquot and store at -20°C. Avoid repeated freeze/thaw cycles.
<b>UniProt Primary AC:</b>	Q09028 ( <a href="#">UniProt</a> , <a href="#">ExpASY</a> )
<b>Gene Symbol:</b>	RBBP4

# Datasheet

Version: 2.0.0  
Revision date: 01 Sep 2024



**GeneID:** [5928](#)

**NCBI Accession:** NP\_005601.1

**KEGG:** hsa:5928

**String:** [9606.ENSP00000362592](#)

**Molecular Weight:** Calculated MW: 48 kDa  
Observed MW: 55 kDa

**Buffer:** PBS, pH 7.3, containing 0.02% sodium azide, 50% glycerol.

**Concentration:** > 0.2 mg/ml

**Note:** This product is for research use only.

For Reference Only