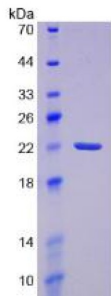


Human Prostaglandin D2 Synthase, Brain (PGD2S) Protein

Catalogue No.: abx166836



SDS-PAGE analysis of Prostaglandin D2 Synthase, Brain Protein.

Prostaglandin D2 Synthase, Brain Protein is a recombinant Human protein expressed in *E. coli*.

Target:	Prostaglandin D2 Synthase, Brain (PGD2S)
Origin:	Human
Expression:	Recombinant
Tested Applications:	WB, SDS-PAGE
Host:	<i>E. coli</i>
Conjugation:	Unconjugated
Form:	Lyophilized
Purity:	> 95%
Reconstitution:	Reconstitute in ddH ₂ O to a concentration of 0.1-1.0 mg/ml. Do not vortex.
Storage:	Store at 2-8 °C for up to one month. Store at -80 °C for up to one year. Avoid repeated freeze/thaw cycles.
Molecular Weight:	Calculated MW: 21.5 kDa Observed MW (SDS-PAGE): 22 kDa
Sequence Fragment:	Pro32-Gln190
Tag:	N-terminal His tag
Buffer:	Prior to lyophilization: 100 mM NaHCO ₃ , 500 mM NaCl, pH 8.3, containing 1 mM EDTA, 1 mM DTT, 0.01% Sarcosyl, 5% Trehalose and Proclin-300.

Datasheet

Version: 1.0.0

Revision date: 31 Dec 2024



Activity: Not tested

Concentration: Prior to lyophilization: 200 µg/ml

Note: This product is for research use only.
Not for human consumption, cosmetic, therapeutic or diagnostic use.

For Reference Only