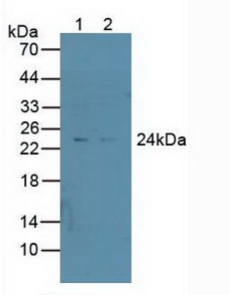
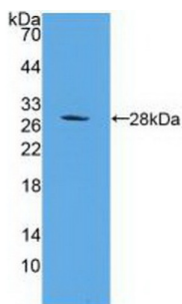


26S Proteasome Non-ATPase Regulatory Subunit 10 (PSMD10) Antibody

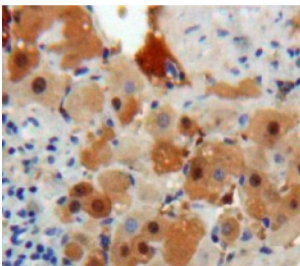
Catalogue No.: abx128662



Western blot analysis of (1) Human A549 Cells and (2) Human HepG2 Cells.



Western blot analysis of recombinant Human PSMD10.



IHC-P analysis of Liver tissue, with DAB staining.

26S Proteasome Non-ATPase Regulatory Subunit 10 (PSMD10) Antibody is a Rabbit Polyclonal against 26S Proteasome Non-ATPase Regulatory Subunit 10 (PSMD10). This gene encodes a subunit of the PA700/19S complex, which is the regulatory component of the 26S proteasome. The 26S proteasome complex is required for ubiquitin-dependent protein degradation. This protein is a non-ATPase subunit that may be involved in protein-protein interactions. Aberrant expression of this gene may play a role in tumorigenesis. Two transcripts encoding different isoforms have been described. Pseudogenes have been identified on chromosomes 3 and 20.

Target: 26S Proteasome Non-ATPase Regulatory Subunit 10 (PSMD10)**Clonality:** Polyclonal**Reactivity:** Human**Tested Applications:** WB, IHC, IF/ICC

Datasheet

Version: 1.0.0
Revision date: 23 Dec 2024



Host:	Rabbit
Recommended dilutions:	WB: 1-5 µg/ml, IHC: 5-20 µg/ml, IF/ICC: 5-20 µg/ml. Optimal dilutions/concentrations should be determined by the end user.
Conjugation:	Unconjugated
Immunogen:	PSMD10 (Met1-Gly226)
Form:	Liquid
Purification:	Purified by antigen-specific affinity chromatography, followed by Protein A affinity chromatography.
Storage:	Aliquot and store at -20°C. Avoid repeated freeze/thaw cycles.
UniProt Primary AC:	O75832 (UniProt , ExPASy)
Gene Symbol:	PSMD10
GeneID:	5716
OMIM:	300880
NCBI Accession:	NP_002805.1, NM_002814.3, NP_736606.1, NM_170750.2
KEGG:	hsa:5716
String:	9606.ENSP00000217958
Buffer:	0.01 M PBS, pH 7.4, containing 0.05% Proclin-300, 50% glycerol.
Note:	This product is for research use only.