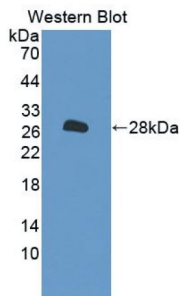
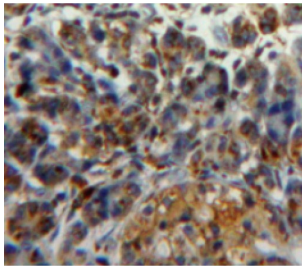


Protein Disulfide Isomerase A2 (PDIA2) Antibody

Catalogue No.: abx128942



Western blot analysis of the recombinant protein.



IHC-P analysis of pancreas tissue, with DAB staining.

Protein Disulfide Isomerase A2 Antibody is a Rabbit Polyclonal against Protein Disulfide Isomerase A2.

| | |
|-------------------------------|------------------------------------------------------------------------------------------------------------------------------|
| Target: | Protein Disulfide Isomerase A2 (PDIA2) |
| Clonality: | Polyclonal |
| Reactivity: | Human |
| Tested Applications: | WB, IHC, IF/ICC |
| Host: | Rabbit |
| Recommended dilutions: | WB: 0.5-2 µg/ml, IHC: 5-20 µg/ml, IF/ICC: 5-20 µg/ml. Optimal dilutions/concentrations should be determined by the end user. |
| Conjugation: | Unconjugated |
| Immunogen: | PDIA2 (Leu309-Leu525) |
| Form: | Liquid |
| Purification: | Purified by antigen-specific affinity chromatography, followed by Protein A affinity chromatography. |
| Storage: | Aliquot and store at -20°C. Avoid repeated freeze/thaw cycles. |

Datasheet

Version: 6.0.0
Revision date: 12 Dec 2024



UniProt Primary AC: Q13087 ([UniProt](#), [ExpASY](#))

KEGG: hsa:64714

String: [9606.ENSP00000219406](#)

Buffer: 0.01 M PBS, pH 7.4, containing 0.05% Proclin-300, 50% glycerol.

Note: This product is for research use only.

For Reference Only