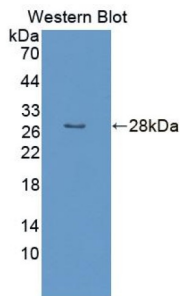
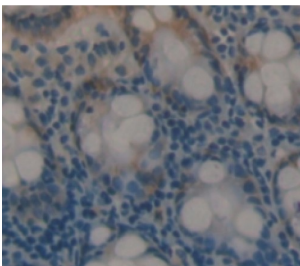


Protein L-Isoaspartate-O-Methyltransferase (PCMT1) Antibody

Catalogue No.: abx129268



Western blot analysis of the recombinant protein.



IHC-P analysis of Human Tissue, with DAB staining.

Protein L-Isoaspartate-O-Methyltransferase Antibody is a Rabbit Polyclonal against Protein L-Isoaspartate-O-Methyltransferase.

Target:	Protein L-Isoaspartate-O-Methyltransferase (PCMT1)
Clonality:	Polyclonal
Reactivity:	Human
Tested Applications:	WB, IHC, IF/ICC
Host:	Rabbit
Recommended dilutions:	WB: 0.5-2 µg/ml, IHC: 5-20 µg/ml, IF/ICC: 5-20 µg/ml. Optimal dilutions/concentrations should be determined by the end user.
Conjugation:	Unconjugated
Immunogen:	PCMT1 (Ala2-Lys227)
Form:	Liquid
Purification:	Purified by antigen-specific affinity chromatography, followed by Protein A affinity chromatography.
Storage:	Aliquot and store at -20°C. Avoid repeated freeze/thaw cycles.

Datasheet

Version: 3.0.0
Revision date: 31 Dec 2024



UniProt Primary AC: P22061 ([UniProt](#), [ExPASy](#))

KEGG: hsa:5110

String: [9606.ENSP00000356354](#)

Buffer: 0.01 M PBS, pH 7.4, containing 0.05% Proclin-300, 50% glycerol.

Note: This product is for research use only.

For Reference Only