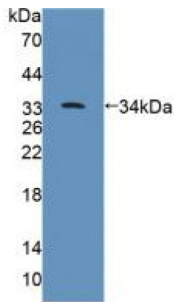
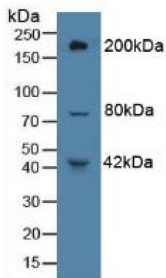


Protein Tyrosine Phosphatase Receptor Type B (PTPRB) Antibody

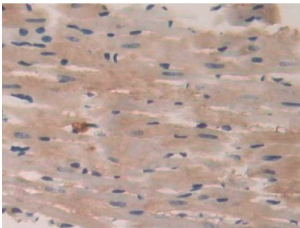
Catalogue No.: abx130068



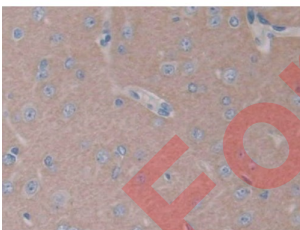
Western blot analysis of recombinant Rat PTPRB.



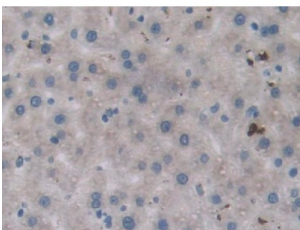
Western blot analysis of Rat Liver Tissue.



IHC-P analysis of Rat Heart Tissue, with DAB staining, using Rabbit Anti-Rat PTPRB Antibody (20 µg/ml) and HRP-conjugated Goat Anti-Rabbit antibody ([abx400043](#), 2 µg/ml).



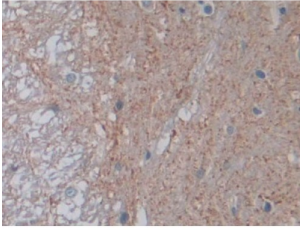
IHC-P analysis of Rat Cerebrum Tissue, with DAB staining, using Rabbit Anti-Rat PTPRB Antibody (20 µg/ml) and HRP-conjugated Goat Anti-Rabbit antibody ([abx400043](#), 2 µg/ml).



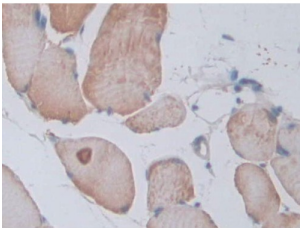
IHC-P analysis of Rat Liver Tissue, with DAB staining, using Rabbit Anti-Rat PTPRB Antibody (20 µg/ml) and HRP-conjugated Goat Anti-Rabbit antibody ([abx400043](#), 2 µg/ml).

Datasheet

Version: 2.0.0
Revision date: 11 Feb 2025



IHC-P analysis of Rat Spinal Cord Tissue, with DAB staining, using Rabbit Anti-Rat PTPRB Antibody (20 µg/ml) and HRP-conjugated Goat Anti-Rabbit antibody ([abx400043](#), 2 µg/ml).



IHC-P analysis of Rat Skeletal Muscle Tissue, with DAB staining, using Rabbit Anti-Rat PTPRB Antibody (20 µg/ml) and HRP-conjugated Goat Anti-Rabbit antibody ([abx400043](#), 2 µg/ml).

Protein Tyrosine Phosphatase Receptor Type B Antibody is a Rabbit Polyclonal against Protein Tyrosine Phosphatase Receptor Type B.

Target:	Protein Tyrosine Phosphatase Receptor Type B (PTPRB)
Clonality:	Polyclonal
Reactivity:	Rat
Tested Applications:	WB, IHC, IF/ICC
Host:	Rabbit
Recommended dilutions:	WB: 0.01-2 µg/ml, IHC: 5-20 µg/ml, IF/ICC: 5-20 µg/ml. Optimal dilutions/concentrations should be determined by the end user.
Conjugation:	Unconjugated
Immunogen:	abx166250 - Recombinant PTPRB (Asn1041-Tyr1310) expressed in E. coli
Form:	Liquid
Purification:	Purified by antigen-specific affinity chromatography, followed by Protein A affinity chromatography.
Storage:	Aliquot and store at -20°C. Avoid repeated freeze/thaw cycles.
Buffer:	0.01 M PBS, pH 7.4, containing 0.05% Proclin-300, 50% glycerol.

Datasheet

Version: 2.0.0

Revision date: 11 Feb 2025



Concentration: 1 mg/ml

Note: This product is for research use only.

For Reference Only