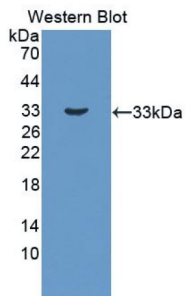
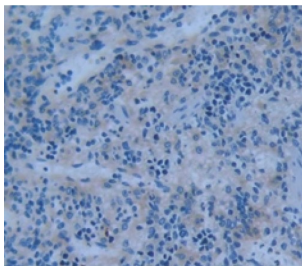


Protein Tyrosine Phosphatase Receptor Type H (PTPRH) Antibody

Catalogue No.: abx130337



Western blot analysis of the recombinant protein.



IHC-P analysis of Kidney tissue, with DAB staining.

Protein Tyrosine Phosphatase Receptor Type H Antibody is a Rabbit Polyclonal against Protein Tyrosine Phosphatase Receptor Type H.

Target:	Protein Tyrosine Phosphatase Receptor Type H (PTPRH)
Clonality:	Polyclonal
Reactivity:	Rat
Tested Applications:	WB, IHC, IF/ICC
Host:	Rabbit
Recommended dilutions:	WB: 0.01-2 µg/ml, IHC: 5-20 µg/ml, IF/ICC: 5-20 µg/ml. Optimal dilutions/concentrations should be determined by the end user.
Conjugation:	Unconjugated
Immunogen:	PTPRH (Arg551-Tyr802)
Form:	Liquid
Purification:	Purified by antigen-specific affinity chromatography, followed by Protein A affinity chromatography.

Datasheet

Version: 3.0.0

Revision date: 13 Mar 2025



Storage: Aliquot and store at -20°C. Avoid repeated freeze/thaw cycles.

Buffer: 0.01 M PBS, pH 7.4, containing 0.05% Proclin-300, 50% glycerol.

Note: THIS PRODUCT IS FOR RESEARCH USE ONLY. NOT FOR USE IN DIAGNOSTIC, THERAPEUTIC OR COSMETIC PROCEDURES. NOT FOR HUMAN OR ANIMAL CONSUMPTION.

For Reference Only