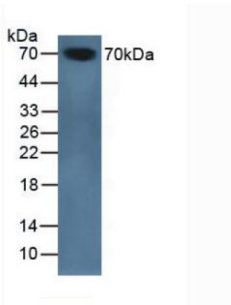
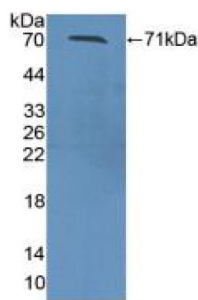


Protein Z Dependent Protease Inhibitor (ZPI) Antibody

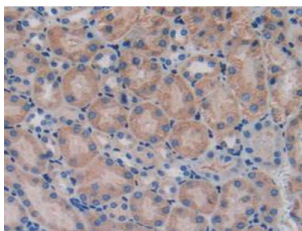
Catalogue No.: abx129687



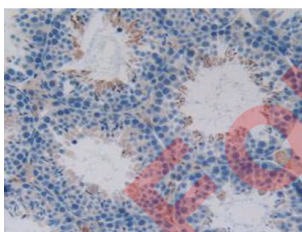
Western blot analysis of Mouse Serum.



Western blot analysis of recombinant Mouse ZPI.



IHC-P analysis of Mouse Kidney Tissue, with DAB staining.



IHC-P analysis of Mouse Testis Tissue, with DAB staining.

Protein Z Dependent Protease Inhibitor Antibody is a Rabbit Polyclonal against Protein Z Dependent Protease Inhibitor.

Target: Protein Z Dependent Protease Inhibitor (ZPI)

Clonality: Polyclonal

Reactivity: Mouse

Datasheet

Version: 2.0.0
Revision date: 13 Mar 2025



| | |
|-------------------------------|--|
| Tested Applications: | WB, IHC, IF/ICC |
| Host: | Rabbit |
| Recommended dilutions: | WB: 0.01-5 µg/ml, IHC: 5-20 µg/ml, IF/ICC: 5-20 µg/ml. Optimal dilutions/concentrations should be determined by the end user. |
| Conjugation: | Unconjugated |
| Immunogen: | ZPI (Phe22-Leu448) |
| Form: | Liquid |
| Purification: | Purified by antigen-specific affinity chromatography, followed by Protein A affinity chromatography. |
| Storage: | Aliquot and store at -20°C. Avoid repeated freeze/thaw cycles. |
| UniProt Primary AC: | Q8R121 (UniProt , ExPASy) |
| Buffer: | 0.01 M PBS, pH 7.4, containing 0.05% Proclin-300, 50% glycerol. |
| Note: | THIS PRODUCT IS FOR RESEARCH USE ONLY. NOT FOR USE IN DIAGNOSTIC, THERAPEUTIC OR COSMETIC PROCEDURES. NOT FOR HUMAN OR ANIMAL CONSUMPTION. |

For Reference Only