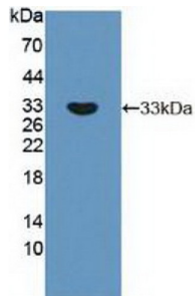
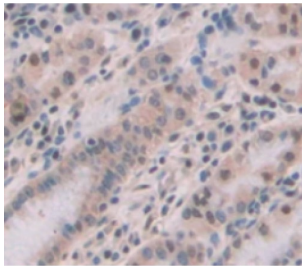


Ribosomal Protein S6 Kinase Beta 1 (RPS6Kb1) Antibody

Catalogue No.: abx129273



Western blot analysis of recombinant Human RPS6Kb1.



IHC-P analysis of Human Tissue, with DAB staining.

Ribosomal Protein S6 Kinase Beta 1 Antibody is a Rabbit Polyclonal against Ribosomal Protein S6 Kinase Beta 1.

Target:	Ribosomal Protein S6 Kinase Beta 1 (RPS6Kb1)
Clonality:	Polyclonal
Reactivity:	Human
Tested Applications:	WB, IHC, IF/ICC
Host:	Rabbit
Recommended dilutions:	WB: 0.01-2 µg/ml, IHC: 5-20 µg/ml, IF/ICC: 5-20 µg/ml. Optimal dilutions/concentrations should be determined by the end user.
Conjugation:	Unconjugated
Immunogen:	RPS6Kb1 (Phe91-Phe352)
Form:	Liquid
Purification:	Purified by antigen-specific affinity chromatography, followed by Protein A affinity chromatography.
Storage:	Aliquot and store at -20°C. Avoid repeated freeze/thaw cycles.

Datasheet

Version: 3.0.0

Revision date: 29 Mar 2025



UniProt Primary AC: P23443 ([UniProt](#), [ExPASy](#))

KEGG: hsa:6198

String: [9606.ENSP00000225577](#)

Buffer: 0.01 M PBS, pH 7.4, containing 0.05% Proclin-300, 50% glycerol.

Note: THIS PRODUCT IS FOR RESEARCH USE ONLY. NOT FOR USE IN DIAGNOSTIC, THERAPEUTIC OR COSMETIC PROCEDURES. NOT FOR HUMAN OR ANIMAL CONSUMPTION.

For Reference Only