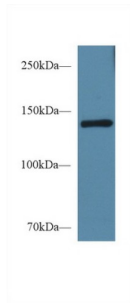
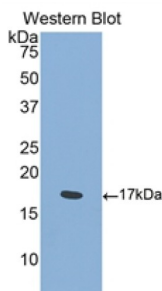


## Semaphorin 4D (SEMA4D) Antibody

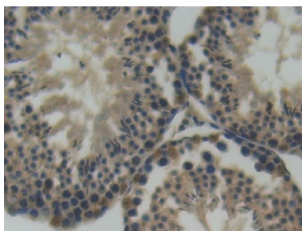
Catalogue No.: abx129555



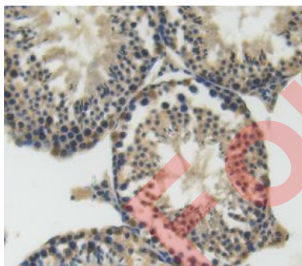
Western blot analysis of Mouse Serum, using Mouse SEMA4D Antibody (1 µg/ml) and HRP-conjugated Goat Anti-Rabbit antibody ([abx400043](#), 0.2 µg/ml).



Western blot analysis of the recombinant protein.



IHC-P analysis of Mouse Testis Tissue, with DAB staining.



IHC-P analysis of testis tissue, with DAB staining.

Semaphorin 4D Antibody is a Rabbit Polyclonal against Semaphorin 4D.

**Target:** Semaphorin 4D (SEMA4D)

**Clonality:** Polyclonal

**Reactivity:** Mouse

# Datasheet

Version: 2.0.0  
Revision date: 12 Mar 2025



<b>Tested Applications:</b>	WB, IHC, IF/ICC
<b>Host:</b>	Rabbit
<b>Recommended dilutions:</b>	WB: 0.01-2 µg/ml, IHC: 5-20 µg/ml, IF/ICC: 5-20 µg/ml. Optimal dilutions/concentrations should be determined by the end user.
<b>Conjugation:</b>	Unconjugated
<b>Immunogen:</b>	SEMA4D (Phe502-Ser636)
<b>Form:</b>	Liquid
<b>Purification:</b>	Purified by antigen-specific affinity chromatography, followed by Protein A affinity chromatography.
<b>Storage:</b>	Aliquot and store at -20°C. Avoid repeated freeze/thaw cycles.
<b>UniProt Primary AC:</b>	O09126 ( <a href="#">UniProt</a> , <a href="#">ExPASy</a> )
<b>KEGG:</b>	mmu:20354
<b>String:</b>	<a href="#">10090.ENSMUSP00000021900</a>
<b>Buffer:</b>	0.01 M PBS, pH 7.4, containing 0.05% Proclin-300, 50% glycerol.
<b>Concentration:</b>	1 mg/ml
<b>Note:</b>	THIS PRODUCT IS FOR RESEARCH USE ONLY. NOT FOR USE IN DIAGNOSTIC, THERAPEUTIC OR COSMETIC PROCEDURES. NOT FOR HUMAN OR ANIMAL CONSUMPTION.

For Reference Only