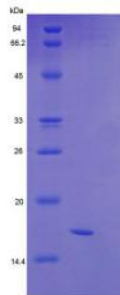


Human Semaphorin 4D (SEMA4D) Protein

Catalogue No.: abx168082



SDS-PAGE analysis of recombinant Human Semaphorin 4D Protein.

Human Semaphorin 4D Protein is a recombinant Human protein expressed in *E. coli*.

This protein is the immunogen for the following antibodies: [abx128569](#)

Target: Semaphorin 4D (SEMA4D)

Origin: Human

Expression: Recombinant

Tested Applications: WB, SDS-PAGE

Host: *E. coli*

Conjugation: Unconjugated

Form: Lyophilized

Purity: > 97%

Reconstitution: To keep the original salt concentration, we recommend reconstituting to the original concentration prior to lyophilization (see Concentration) in ddH₂O. If a lower concentration is required, dilute in 20 mM Tris, 150 mM NaCl, pH 8.0. If a higher concentration is required, the product can be reconstituted directly in 20 mM Tris, 150 mM NaCl, pH 8.0, though please note that this will change the overall salt concentration. The stock concentration should be between 0.1-1.0 mg/ml. Do not vortex.

Storage: Store at 2-8 °C for up to one month. Store at -80 °C for up to one year. Avoid repeated freeze/thaw cycles.

UniProt Primary AC: Q92854 ([UniProt](#), [ExPASy](#))

Gene Symbol: SEMA4D

Datasheet

Version: 1.0.0
Revision date: 02 Dec 2024



GeneID: [10507](#)

OMIM: [601866](#)

HGNC: 10732

Molecular Weight: Calculated MW: 16.2 kDa
Observed MW (SDS-PAGE): 18 kDa

Sequence Fragment: Phe502-Phe636

Tag: N-terminal His tag

Buffer: Prior to lyophilization: 20 mM Tris, 150 mM NaCl, pH 8.0, containing 1 mM EDTA, 1 mM DTT, 0.01% Sarcosyl, 5% Trehalose and Proclin-300.

Activity: Not tested

Concentration: Prior to lyophilization: 200 µg/ml

Note: This product is for research use only.
Not for human consumption, cosmetic, therapeutic or diagnostic use.

For Reference Only