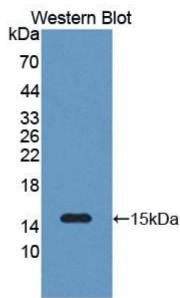
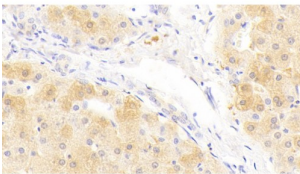


Serum Amyloid A-2 Protein (SAA2) Antibody

Catalogue No.: abx128060



Western blot analysis of recombinant Human SAA2.



IHC-P analysis of Human tissue, with DAB staining.

Serum Amyloid A-2 Protein Antibody is a Rabbit Polyclonal against Serum Amyloid A-2 Protein.

Target:	Serum Amyloid A-2 Protein (SAA2)
Clonality:	Polyclonal
Reactivity:	Human
Tested Applications:	WB, IHC, IF/ICC
Host:	Rabbit
Recommended dilutions:	WB: 0.5-2 µg/ml, IHC: 5-20 µg/ml, IF/ICC: 5-20 µg/ml. Optimal dilutions/concentrations should be determined by the end user.
Conjugation:	Unconjugated
Immunogen:	abx166518 - Recombinant SAA2 (Arg19-Tyr122) expressed in E. coli
Form:	Liquid
Purification:	Purified by antigen-specific affinity chromatography, followed by Protein A affinity chromatography.
Storage:	Aliquot and store at -20°C. Avoid repeated freeze/thaw cycles.

Datasheet

Version: 2.0.0

Revision date: 06 Oct 2024



UniProt Primary AC: P0DJ19 ([UniProt](#), [ExPASy](#))

Gene Symbol: SAA2

GeneID: [6289](#)

OMIM: [104751](#)

HGNC: 10514

KEGG: hsa:6289

Ensembl: ENSG00000134339

Buffer: 0.01 M PBS, pH 7.4, containing 0.05% Proclin-300, 50% glycerol.

Note: This product is for research use only.

For Reference Only