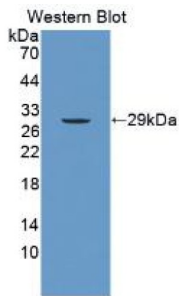


Datasheet

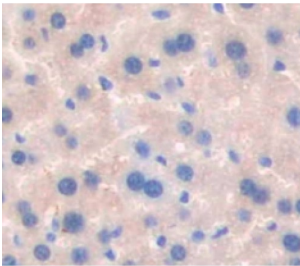
Version: 2.0.0
Revision date: 01 Sep 2024

Serum Amyloid P Component (SAP) Antibody

Catalogue No.: abx129714



Western blot analysis of the recombinant protein.



IHC-P analysis of Mouse Tissue, with DAB staining.

Serum Amyloid P Component Antibody is a Rabbit Polyclonal against Serum Amyloid P Component.

Target:	Serum Amyloid P Component (SAP)
Clonality:	Polyclonal
Reactivity:	Mouse
Tested Applications:	WB, IHC, IF/ICC
Host:	Rabbit
Recommended dilutions:	WB: 0.5-2 µg/ml, IHC: 5-20 µg/ml, IF/ICC: 5-20 µg/ml. Optimal dilutions/concentrations should be determined by the end user.
Conjugation:	Unconjugated
Immunogen:	Cys20-Asp224
Form:	Liquid
Purification:	Purified by antigen-specific affinity chromatography, followed by Protein A affinity chromatography.
Storage:	Aliquot and store at -20°C. Avoid repeated freeze/thaw cycles.

Datasheet

Version: 2.0.0

Revision date: 01 Sep 2024



UniProt Primary AC: P12246 ([UniProt](#), [ExPASy](#))

KEGG: mmu:20219

String: [10090.ENSMUSP00000027824](#)

Buffer: 0.01 M PBS, pH 7.4, containing 0.05% Proclin-300, 50% glycerol.

Note: This product is for research use only.

For Reference Only