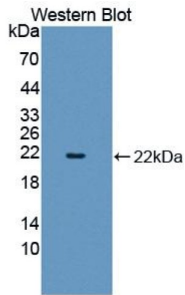
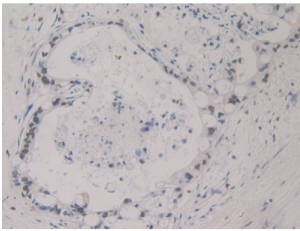


Sex Hormone Binding Globulin (SHBG) Antibody

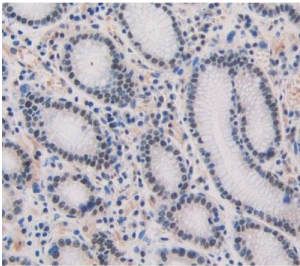
Catalogue No.: abx128914



Western blot analysis of the recombinant protein.



IHC-P analysis of Human Bile duct cancer Tissue, with DAB staining.



IHC-P analysis of stomach tissue, with DAB staining.

Sex Hormone Binding Globulin Antibody is a Rabbit Polyclonal against Sex Hormone Binding Globulin.

Target: Sex Hormone Binding Globulin (SHBG)

Clonality: Polyclonal

Reactivity: Human

Tested Applications: WB, IHC, IF/ICC

Host: Rabbit

Recommended dilutions: WB: 0.01-2 µg/ml, IHC: 5-20 µg/ml, IF/ICC: 5-20 µg/ml. Optimal dilutions/concentrations should be determined by the end user.

Conjugation: Unconjugated

Datasheet

Version: 2.0.0
Revision date: 23 Feb 2025



Immunogen:	SHBG (Pro51-Asp218)
Form:	Liquid
Purification:	Purified by antigen-specific affinity chromatography, followed by Protein A affinity chromatography.
Storage:	Aliquot and store at -20°C. Avoid repeated freeze/thaw cycles.
UniProt Primary AC:	P04278 (UniProt , ExPASy)
KEGG:	hsa:6462
String:	9606.ENSP00000369816
Buffer:	0.01 M PBS, pH 7.4, containing 0.05% Proclin-300, 50% glycerol.
Note:	This product is for research use only.

For Reference Only