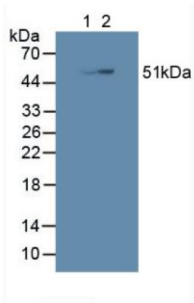
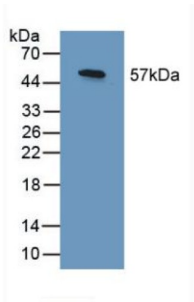


SHC-Transforming Protein 3 (SHC3) Antibody

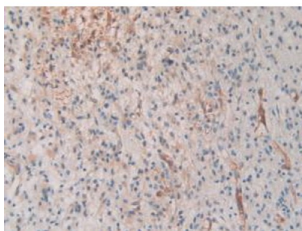
Catalogue No.: abx129117



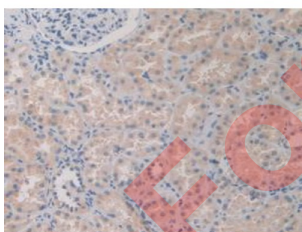
Western blot analysis of (1) Porcine Brain Tissue and (2) Human HepG2 Cells.



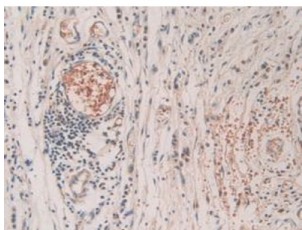
Western blot analysis of recombinant Human SHC3.



IHC-P analysis of Human Glioma Tissue, with DAB staining.



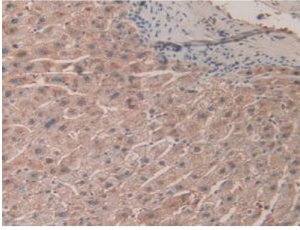
IHC-P analysis of Human Kidney Tissue, with DAB staining.



IHC-P analysis of Human Stomach Cancer Tissue, with DAB staining.

Datasheet

Version: 1.0.0
Revision date: 06 Oct 2024



IHC-P analysis of Human Liver Tissue, with DAB staining.

SHC-Transforming Protein 3 Antibody is a Rabbit Polyclonal against SHC-Transforming Protein 3.

Target:	SHC-Transforming Protein 3 (SHC3)
Clonality:	Polyclonal
Reactivity:	Human
Tested Applications:	WB, IHC, IF/ICC
Host:	Rabbit
Recommended dilutions:	WB: 0.5-2 µg/ml, IHC: 5-20 µg/ml, IF/ICC: 5-20 µg/ml. Optimal dilutions/concentrations should be determined by the end user.
Conjugation:	Unconjugated
Immunogen:	SHC3 (Val188-Gln433)
Form:	Liquid
Purification:	Purified by antigen-specific affinity chromatography, followed by Protein A affinity chromatography.
Storage:	Aliquot and store at -20°C. Avoid repeated freeze/thaw cycles.
Buffer:	0.01 M PBS, pH 7.4, containing 0.05% Proclin-300, 50% glycerol.
Note:	This product is for research use only.