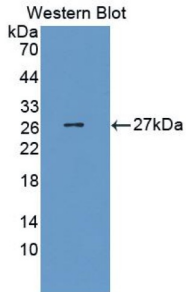
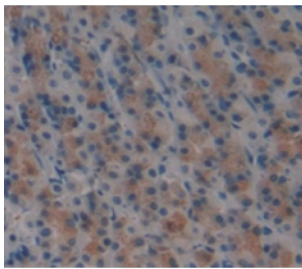


Signaling Lymphocytic Activation Molecule Family Member 1 / CD150 (SLAMF1) Antibody

Catalogue No.: abx130343



Western blot analysis of the recombinant protein.



IHC-P analysis of Kidney tissue, with DAB staining.

Signaling Lymphocytic Activation Molecule Family, Member 1 Antibody is a Rabbit Polyclonal against Signaling Lymphocytic Activation Molecule Family, Member 1.

- Target:** Signaling Lymphocytic Activation Molecule Family Member 1 / CD150 (SLAMF1)
- Clonality:** Polyclonal
- Reactivity:** Rat
- Tested Applications:** WB, IHC, IF/ICC
- Host:** Rabbit
- Recommended dilutions:** WB: 0.01-2 µg/ml, IHC: 5-20 µg/ml, IF/ICC: 5-20 µg/ml. Optimal dilutions/concentrations should be determined by the end user.
- Conjugation:** Unconjugated
- Immunogen:** SLAMF1 (Leu17-Trp227)
- Form:** Liquid
- Purification:** Purified by antigen-specific affinity chromatography, followed by Protein A affinity chromatography.

Datasheet

Version: 3.0.0

Revision date: 12 Mar 2025



Storage: Aliquot and store at -20°C. Avoid repeated freeze/thaw cycles.

Buffer: 0.01 M PBS, pH 7.4, containing 0.05% Proclin-300, 50% glycerol.

Note: THIS PRODUCT IS FOR RESEARCH USE ONLY. NOT FOR USE IN DIAGNOSTIC, THERAPEUTIC OR COSMETIC PROCEDURES. NOT FOR HUMAN OR ANIMAL CONSUMPTION.

For Reference Only