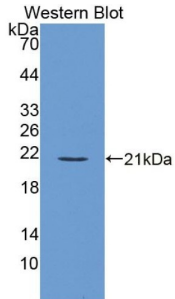
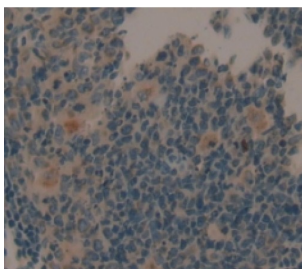


# Signaling Lymphocytic Activation Molecule Family, Member 7 (SLAMF7) Antibody

Catalogue No.: abx129220



Western blot analysis of the recombinant protein.



IHC-P analysis of Human Tissue, with DAB staining.

Signaling Lymphocytic Activation Molecule Family, Member 7 Antibody is a Rabbit Polyclonal against Signaling Lymphocytic Activation Molecule Family, Member 7.

**Target:** Signaling Lymphocytic Activation Molecule Family, Member 7 (SLAMF7)

**Clonality:** Polyclonal

**Reactivity:** Human

**Tested Applications:** WB, IHC, IF/ICC

**Host:** Rabbit

**Recommended dilutions:** WB: 0.5-2 µg/ml, IHC: 5-20 µg/ml, IF/ICC: 5-20 µg/ml. Optimal dilutions/concentrations should be determined by the end user.

**Conjugation:** Unconjugated

**Immunogen:** SLAMF7 (Ser23-His175)

**Form:** Liquid

**Purification:** Purified by antigen-specific affinity chromatography, followed by Protein A affinity chromatography.

# Datasheet

Version: 1.0.0

Revision date: 04 Dec 2024



**Storage:** Aliquot and store at -20°C. Avoid repeated freeze/thaw cycles.

**UniProt Primary AC:** Q9NQ25 ([UniProt](#), [ExPASy](#))

**String:** [9606.ENSP00000357022](#)

**Buffer:** 0.01 M PBS, pH 7.4, containing 0.05% Proclin-300, 50% glycerol.

**Note:** This product is for research use only.

For Reference Only