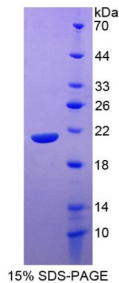


Human Signaling Lymphocytic Activation Molecule Family, Member 7 (SLAMF7) Protein

Catalogue No.: abx167045



SDS-PAGE analysis of SLAMF7 Protein.

SLAMF7 Protein is a recombinant Human protein expressed in E. coli.

Target:	Signaling Lymphocytic Activation Molecule Family, Member 7 (SLAMF7)
Origin:	Human
Expression:	Recombinant
Tested Applications:	WB, SDS-PAGE
Host:	E. coli
Conjugation:	Unconjugated
Form:	Lyophilized
Purity:	> 95%
Reconstitution:	To keep the original salt concentration, we recommend reconstituting to the original concentration prior to lyophilization (see Concentration) in ddH ₂ O. If a lower concentration is required, dilute in 20 mM Tris, 150 mM NaCl, pH 8.0. If a higher concentration is required, the product can be reconstituted directly in 20 mM Tris, 150 mM NaCl, pH 8.0, though please note that this will change the overall salt concentration. The stock concentration should be between 0.1-1.0 mg/ml. Do not vortex.
Storage:	Store at 2-8 °C for up to one month. Store at -80 °C for up to one year. Avoid repeated freeze/thaw cycles.
Molecular Weight:	Calculated MW: 20.5 kDa Observed MW (SDS-PAGE): 21 kDa
Sequence Fragment:	Ser23-His175

Datasheet

Version: 4.0.0

Revision date: 02 Mar 2025



Sequence: SGPVKELV GSVGGAVTFP LKSKVKQVDS IWTFNTTPL VTIQPEGGTI IVTQNRNRER
VDFPDGGYSL
KLSKLLKKNDS GIYYVGIYSS SLQQPSTQEY VLHVYEHLK PKVTMGLQSN KNGTCVTNLT
CCMEHGEEED
V IYTWKALGQA ANESH

Tag: N-terminal His tag

Buffer: Prior to lyophilization: 20 mM Tris, 150 mM NaCl, pH 8.0, containing 0.01% Sarcosyl, 5% Trehalose.

Activity: Not tested

Concentration: Prior to lyophilization: 200 µg/ml

Note: THIS PRODUCT IS FOR RESEARCH USE ONLY. NOT FOR USE IN DIAGNOSTIC, THERAPEUTIC OR COSMETIC PROCEDURES. NOT FOR HUMAN OR ANIMAL CONSUMPTION.

For Reference Only