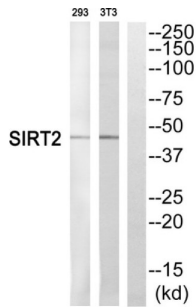


Sirtuin 2 (SIRT2) Antibody

Catalogue No.: abx015144



Western blot analysis of extracts from 293 cells and NIH/3T3 cells, using SIRT2 antibody.

Rabbit polyclonal antibody against SIRT2 protein. Immunogen region is C-terminal.

Target:	Sirtuin 2 (SIRT2)
Clonality:	Polyclonal
Reactivity:	Human, Mouse, Rat
Tested Applications:	ELISA, WB
Host:	Rabbit
Recommended dilutions:	WB: 1/500 - 1/3000, ELISA: 1/5000. Optimal dilutions/concentrations should be determined by the end user.
Conjugation:	Unconjugated
Immunogen:	The antiserum was produced against synthesized peptide derived from C-terminal of human SIRT2.
Isotype:	IgG
Form:	Liquid
Purification:	Purified from rabbit antiserum by affinity chromatography using epitope-specific immunogen.
Storage:	Aliquot and store at -20°C. Avoid repeated freeze/thaw cycles.
UniProt Primary AC:	Q8IXJ6 (UniProt , ExPASy)
KEGG:	hsa:22933
String:	9606.ENSP00000249396

Datasheet

Version: 3.0.0

Revision date: 14 Jan 2025



- Buffer:** PBS (without Mg^{2+} and Ca^{2+}), pH 7.4, 150 mM NaCl, 0.02% sodium azide, 50% glycerol.
- Concentration:** 1 mg/ml
- Note:** This product is for research use only.

For Reference Only