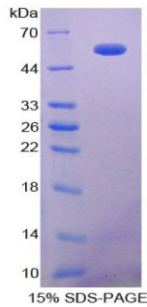


Rat Pulmonary Surfactant-Associated Protein A1 (SFTPA1) Protein

Catalogue No.: abx166076



SDS-PAGE analysis of Surfactant Associated Protein A Protein.

Surfactant Associated Protein A is a recombinant Rat protein expressed in *E. coli*.

Target:	Pulmonary Surfactant-Associated Protein A1 (SFTPA1)
Origin:	Rat
Expression:	Recombinant
Tested Applications:	WB, SDS-PAGE
Host:	<i>E. coli</i>
Conjugation:	Unconjugated
Form:	Lyophilized
Purity:	> 95%
Reconstitution:	To keep the original salt concentration, we recommend reconstituting to the original concentration prior to lyophilization (see Concentration) in ddH ₂ O. If a lower concentration is required, dilute in PBS, pH 7.4. If a higher concentration is required, the product can be reconstituted directly in PBS, pH 7.4, though please note that this will change the overall salt concentration. The stock concentration should be between 0.1-1.0 mg/ml. Do not vortex.
Storage:	Store at 2-8 °C for up to one month. Store at -80 °C for up to one year. Avoid repeated freeze/thaw cycles.
UniProt Primary AC:	P08427 (UniProt , ExPASy)
Gene Symbol:	SFTPA1
GeneID:	24773

Datasheet

Version: 1.0.0
Revision date: 26 Mar 2025



KEGG: rno:24773

Ensembl: ENSRNOG00000011438

String: [10116.ENSRNOP00000039850](#)

Molecular Weight: Calculated MW: 56.6 kDa
Observed MW (SDS-PAGE): 54 kDa

Sequence Fragment: Asn21-Phe248

Tag: N-terminal His tag and GST tag

Buffer: Prior to lyophilization: PBS, pH 7.4, containing 0.01% Sarcosyl, 1 mM DTT, 5% Trehalose and Proclin-300.

Activity: Not tested

Concentration: Prior to lyophilization: 200 µg/ml

Note: THIS PRODUCT IS FOR RESEARCH USE ONLY. NOT FOR USE IN DIAGNOSTIC, THERAPEUTIC OR COSMETIC PROCEDURES. NOT FOR HUMAN OR ANIMAL CONSUMPTION.

For Reference Only