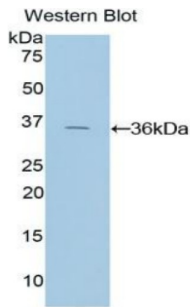
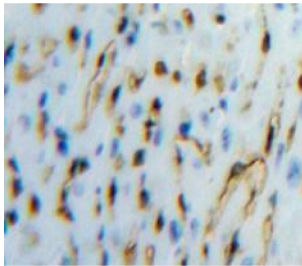


Tissue Factor Pathway Inhibitor (TFPI) Antibody

Catalogue No.: abx129517



Western blot analysis of the recombinant protein.



IHC-P analysis of Heart tissue, with DAB staining.

TFPI Antibody is a Rabbit Polyclonal against TFPI.

Target:	Tissue Factor Pathway Inhibitor (TFPI)
Clonality:	Polyclonal
Reactivity:	Mouse
Tested Applications:	WB, IHC, IF/ICC
Host:	Rabbit
Recommended dilutions:	WB: 0.01-2 µg/ml, IHC: 5-20 µg/ml, IF/ICC: 5-20 µg/ml. Optimal dilutions/concentrations should be determined by the end user.
Conjugation:	Unconjugated
Immunogen:	TFPI (Leu29-Asn306)
Form:	Liquid
Purification:	Purified by antigen-specific affinity chromatography, followed by Protein A affinity chromatography.
Storage:	Aliquot and store at -20°C. Avoid repeated freeze/thaw cycles.

Datasheet

Version: 3.0.0

Revision date: 18 Apr 2025



UniProt Primary AC: O54819 ([UniProt](#), [ExpASY](#))

KEGG: mmu:21788

String: [10090.ENSMUSP00000107347](#)

Buffer: 0.01 M PBS, pH 7.4, containing 0.05% Proclin-300, 50% glycerol.

Note: THIS PRODUCT IS FOR RESEARCH USE ONLY. NOT FOR USE IN DIAGNOSTIC, THERAPEUTIC OR COSMETIC PROCEDURES. NOT FOR HUMAN OR ANIMAL CONSUMPTION.

For Reference Only