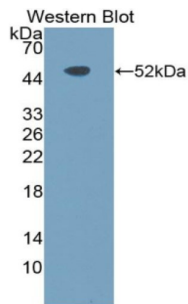
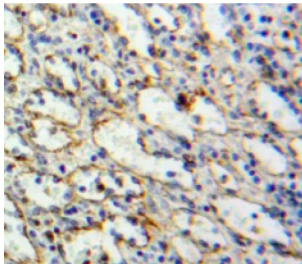


Toll Like Receptor 10 (TLR10) Antibody

Catalogue No.: abx128824



Western blot analysis of the recombinant protein.



IHC-P analysis of Spleen tissue, with DAB staining.

Toll Like Receptor 10 Antibody is a Rabbit Polyclonal against Toll Like Receptor 10.

Target:	Toll Like Receptor 10 (TLR10)
Clonality:	Polyclonal
Reactivity:	Human
Tested Applications:	WB, IHC, IF/ICC
Host:	Rabbit
Recommended dilutions:	WB: 0.5-2 µg/ml, IHC: 5-20 µg/ml, IF/ICC: 5-20 µg/ml. Optimal dilutions/concentrations should be determined by the end user.
Conjugation:	Unconjugated
Immunogen:	TLR10 (Trp617-Glu784)
Form:	Liquid
Purification:	Purified by antigen-specific affinity chromatography, followed by Protein A affinity chromatography.
Storage:	Aliquot and store at -20°C. Avoid repeated freeze/thaw cycles.

Datasheet

Version: 1.0.0

Revision date: 03 Dec 2024



UniProt Primary AC: Q9BXR5 ([UniProt](#), [ExPASy](#))

String: [9606.ENSP00000308925](#)

Buffer: 0.01 M PBS, pH 7.4, containing 0.05% Proclin-300, 50% glycerol.

Note: This product is for research use only.

For Reference Only