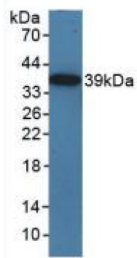
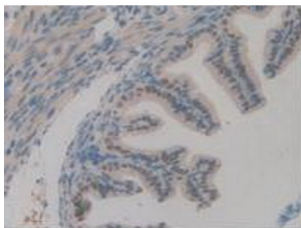


Toll Like Receptor Adaptor Molecule 1 (TICAM1) Antibody

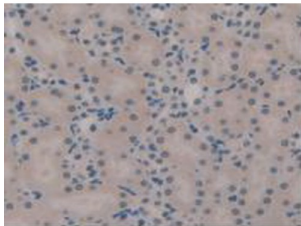
Catalogue No.: abx129792



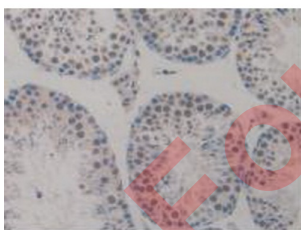
Western blot analysis of recombinant Mouse TICAM1.



IHC-P analysis of Mouse Ovary Tissue, with DAB staining.



IHC-P analysis of Mouse Kidney Tissue, with DAB staining.



IHC-P analysis of Mouse Testis Tissue, with DAB staining.

Toll Like Receptor Adaptor Molecule 1 Antibody is a Rabbit Polyclonal against Toll Like Receptor Adaptor Molecule 1.

Target: Toll Like Receptor Adaptor Molecule 1 (TICAM1)

Clonality: Polyclonal

Reactivity: Mouse

Datasheet

Version: 3.0.0
Revision date: 12 Mar 2025



Tested Applications:	WB, IHC, IF/ICC
Host:	Rabbit
Recommended dilutions:	WB: 0.01-2 µg/ml, IHC: 5-20 µg/ml, IF/ICC: 5-20 µg/ml. Optimal dilutions/concentrations should be determined by the end user.
Conjugation:	Unconjugated
Immunogen:	TICAM1 (Ser263-Val526)
Form:	Liquid
Purification:	Purified by antigen-specific affinity chromatography, followed by Protein A affinity chromatography.
Storage:	Aliquot and store at -20°C. Avoid repeated freeze/thaw cycles.
UniProt Primary AC:	Q80UF7 (UniProt , ExPASy)
KEGG:	mmu:106759
String:	10090.ENSMUSP00000055104
Buffer:	0.01 M PBS, pH 7.4, containing 0.05% Proclin-300, 50% glycerol.
Concentration:	1 mg/ml
Note:	THIS PRODUCT IS FOR RESEARCH USE ONLY. NOT FOR USE IN DIAGNOSTIC, THERAPEUTIC OR COSMETIC PROCEDURES. NOT FOR HUMAN OR ANIMAL CONSUMPTION.

For Reference Only