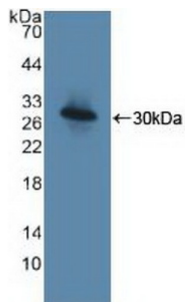
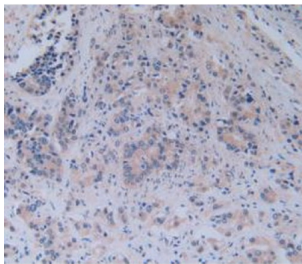


Toll Like Receptor Adaptor Molecule 1 (TICAM1) Antibody

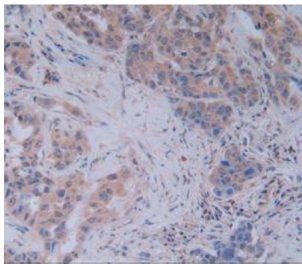
Catalogue No.: abx129122



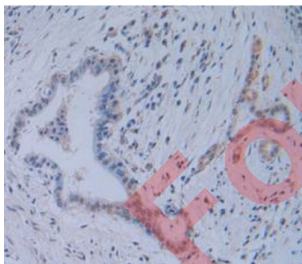
Western blot analysis of recombinant Human TICAM1.



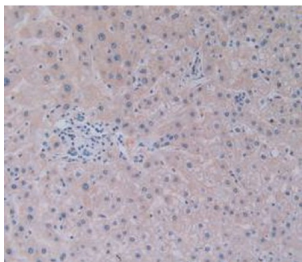
IHC-P analysis of Human Prostate Gland Tissue, with DAB staining.



IHC-P analysis of Human Breast Cancer Tissue, with DAB staining.



IHC-P analysis of Human Pancreas Cancer Tissue, with DAB staining.



IHC-P analysis of Human Liver Tissue, with DAB staining.

Datasheet

Version: 2.0.0
Revision date: 06 Feb 2025



Toll Like Receptor Adaptor Molecule 1 Antibody is a Rabbit Polyclonal against Toll Like Receptor Adaptor Molecule 1.

Target:	Toll Like Receptor Adaptor Molecule 1 (TICAM1)
Clonality:	Polyclonal
Reactivity:	Human
Tested Applications:	WB, IHC, IF/ICC
Host:	Rabbit
Recommended dilutions:	WB: 1-5 µg/ml, IHC: 5-20 µg/ml, IF/ICC: 5-20 µg/ml. Optimal dilutions/concentrations should be determined by the end user.
Conjugation:	Unconjugated
Immunogen:	TICAM1 (Gln443-Gln685)
Form:	Liquid
Purification:	Purified by antigen-specific affinity chromatography, followed by Protein A affinity chromatography.
Storage:	Aliquot and store at -20°C. Avoid repeated freeze/thaw cycles.
UniProt Primary AC:	Q8IUC6 (UniProt , ExPASy)
Buffer:	0.01 M PBS, pH 7.4, containing 0.05% Proclin-300, 50% glycerol.
Note:	This product is for research use only.

For Reference Only