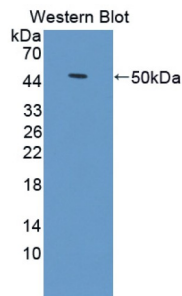


Toll Like Receptor Adaptor Molecule 2 (TICAM2) Antibody

Catalogue No.: abx129378



Western blot analysis of the recombinant protein.

Toll Like Receptor Adaptor Molecule 2 Antibody is a Rabbit Polyclonal against Toll Like Receptor Adaptor Molecule 2.

Target:	Toll Like Receptor Adaptor Molecule 2 (TICAM2)
Clonality:	Polyclonal
Reactivity:	Mouse
Tested Applications:	WB, IHC, IF/ICC
Host:	Rabbit
Recommended dilutions:	WB: 0.01-2 µg/ml, IHC: 5-20 µg/ml, IF/ICC: 5-20 µg/ml. Optimal dilutions/concentrations should be determined by the end user.
Conjugation:	Unconjugated
Immunogen:	TICAM2 (Ser20-Ser196)
Form:	Liquid
Purification:	Purified by antigen-specific affinity chromatography, followed by Protein A affinity chromatography.
Storage:	Aliquot and store at -20°C. Avoid repeated freeze/thaw cycles.
Buffer:	0.01 M PBS, pH 7.4, containing 0.05% Proclin-300, 50% glycerol.
Note:	THIS PRODUCT IS FOR RESEARCH USE ONLY. NOT FOR USE IN DIAGNOSTIC, THERAPEUTIC OR COSMETIC PROCEDURES. NOT FOR HUMAN OR ANIMAL CONSUMPTION.