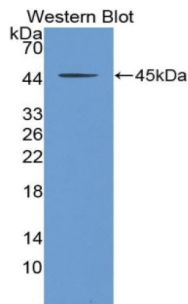


Transforming Growth Factor Beta 1 (TGFB1) Antibody

Catalogue No.: abx104935



Western blot analysis of the recombinant protein.

Transforming Growth Factor Beta 1 Antibody is a Rabbit Polyclonal against Transforming Growth Factor Beta 1.

Target:	Transforming Growth Factor Beta 1 (TGFB1)
Clonality:	Polyclonal
Reactivity:	Horse
Tested Applications:	WB, IHC, IF/ICC
Host:	Rabbit
Recommended dilutions:	WB: 0.01-2 µg/ml, IHC: 5-20 µg/ml, IF/ICC: 5-20 µg/ml. Optimal dilutions/concentrations should be determined by the end user.
Conjugation:	Unconjugated
Immunogen:	TGFb1 (Ala279-Ser390)
Form:	Liquid
Purification:	Purified by antigen-specific affinity chromatography , followed by Protein A affinity chromatography.
Storage:	Aliquot and store at -20°C. Avoid repeated freeze/thaw cycles.
Buffer:	0.01 M PBS, pH 7.4, containing 0.05% Proclin-300, 50% glycerol.
Note:	THIS PRODUCT IS FOR RESEARCH USE ONLY. NOT FOR USE IN DIAGNOSTIC, THERAPEUTIC OR COSMETIC PROCEDURES. NOT FOR HUMAN OR ANIMAL CONSUMPTION.