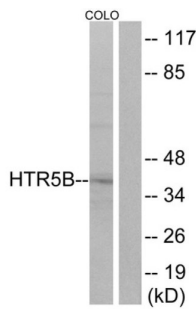
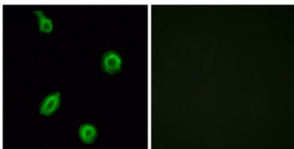


HTR5B Antibody

Catalogue No.: abx015214



Western blot analysis of extracts from COLO cells, using HTR5B antibody. The lane on the right is blocked with the synthesised peptide.



Immunofluorescence analysis of HUVEC cells, using HTR5B antibody. The image on the right is blocked with the synthesised peptide.

Rabbit polyclonal antibody against HTR5B protein.

Target:	HTR5B
Clonality:	Polyclonal
Reactivity:	Mouse, Rat
Tested Applications:	ELISA, WB, IF/ICC
Host:	Rabbit
Recommended dilutions:	WB: 1/500 - 1/3000, IF/ICC: 1/100 - 1/500, ELISA: 1/40000. Optimal dilutions/concentrations should be determined by the end user.
Conjugation:	Unconjugated
Immunogen:	The antiserum was produced against synthesized peptide derived from the internal region of human HTR5B.
Isotype:	IgG
Form:	Liquid
Purification:	Purified from rabbit antiserum by affinity chromatography using epitope-specific immunogen.

Datasheet

Version: 1.0.0
Revision date: 03 Dec 2024



Storage: Aliquot and store at -20°C. Avoid repeated freeze/thaw cycles.

UniProt Primary AC: P35365 ([UniProt](#), [ExPASy](#))

KEGG: rno:79247

String: [10116.ENSRNOP00000003441](#)

Buffer: PBS (without Mg²⁺ and Ca²⁺), pH 7.4, 150 mM NaCl, 0.02% sodium azide, 50% glycerol.

Concentration: 1 mg/ml

Note: This product is for research use only.

For Reference Only