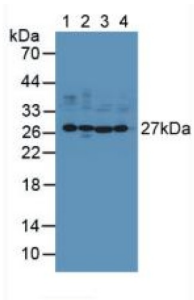
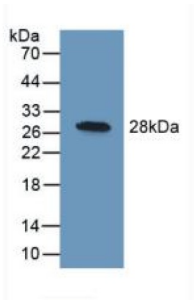


Ubiquitin Carboxyl Terminal Hydrolase L1 (UCHL1) Antibody

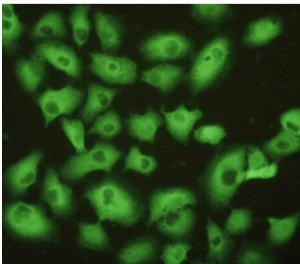
Catalogue No.: abx128875



Western blot analysis of (1) Mouse Brain Tissue, (2) Porcine Brain Tissue, (3) Human U-87MG Cells and (4) Human A549 Cells.



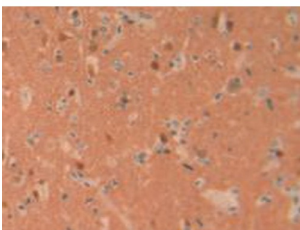
Western blot analysis of recombinant Human UCHL1.



IHC-P analysis of A549 cells, with FITC staining.



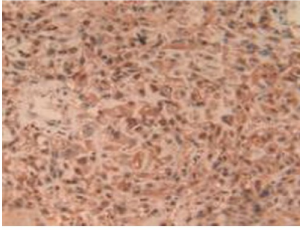
IHC-P analysis of Human Glioma Tissue, with DAB staining.



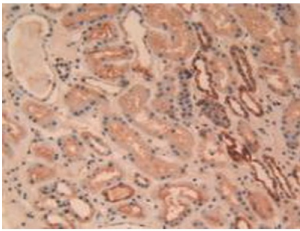
IHC-P analysis of Human Brain Tissue, with DAB staining.

Datasheet

Version: 1.0.0
Revision date: 28 Dec 2024



IHC-P analysis of Human Lung Cancer Tissue, with DAB staining.



IHC-P analysis of Human Kidney Tissue, with DAB staining.

Ubiquitin Carboxyl Terminal Hydrolase L1 Antibody is a Rabbit Polyclonal against Ubiquitin Carboxyl Terminal Hydrolase L1.

Target:	Ubiquitin Carboxyl Terminal Hydrolase L1 (UCHL1)
Clonality:	Polyclonal
Reactivity:	Human
Tested Applications:	WB, IHC, IF/ICC
Host:	Rabbit
Recommended dilutions:	WB: 0.5-2 µg/ml, IHC: 5-20 µg/ml, IF/ICC: 5-20 µg/ml. Optimal dilutions/concentrations should be determined by the end user.
Conjugation:	Unconjugated
Immunogen:	UCHL1 (Gln2-Ala223)
Form:	Liquid
Purification:	Purified by antigen-specific affinity chromatography, followed by Protein A affinity chromatography.
Storage:	Aliquot and store at -20°C. Avoid repeated freeze/thaw cycles.
UniProt Primary AC:	P09936 (UniProt , ExpASY)

Datasheet

Version: 1.0.0
Revision date: 28 Dec 2024



KEGG: hsa:7345

String: [9606.ENSP00000284440](#)

Buffer: 0.01 M PBS, pH 7.4, containing 0.05% Proclin-300, 50% glycerol.

Concentration: 1 mg/ml

Note: This product is for research use only.

For Reference Only