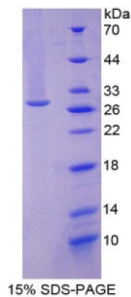


Human Ubiquitin Carboxyl Terminal Hydrolase L1 (UCHL1) Protein

Catalogue No.: abx166631



SDS-PAGE analysis of recombinant Human Ubiquitin Carboxyl Terminal Hydrolase L1 Protein.

Human Ubiquitin Carboxyl Terminal Hydrolase L1 Protein is a recombinant Human protein expressed in *E. coli*.

Target:	Ubiquitin Carboxyl Terminal Hydrolase L1 (UCHL1)
Origin:	Human
Expression:	Recombinant
Tested Applications:	WB, SDS-PAGE
Host:	<i>E. coli</i>
Conjugation:	Unconjugated
Form:	Lyophilized
Purity:	> 95%
Reconstitution:	Reconstitute in ddH ₂ O to a concentration of 0.1-0.2 mg/ml. Do not vortex.
Storage:	Store at 2-8 °C for up to one month. Store at -80 °C for up to one year. Avoid repeated freeze/thaw cycles.
UniProt Primary AC:	P09936 (UniProt , ExPASy)
KEGG:	hsa:7345
String:	9606.ENSP00000284440
Molecular Weight:	Calculated MW: 28.2 kDa Observed MW (SDS-PAGE): 28 kDa
Sequence Fragment:	Gln2-Ala223

Datasheet

Version: 4.0.0

Revision date: 06 Mar 2025



Sequence: QLKPM EINP EMLNKVLSRL GVAGQWRFVD VLGLEEEESLG SVPAPACALL LLFPLTAQHE
NFRKKQIEEL
KGQEVSPKVY FMKQTIGNSC GTIGLIHAVA NNQDKLGFED GSVLKQFLSE TEKMSPEDRA
KCFEKNEA
IQ AAHDAVAQEG QCRVDDKVN FHFILFNNVDG HLYELDGRMP FPNHVGASSE DTLLKDKAAKV
CREFTE
REQG EVRFSVAVALC KAA

Tag: N-terminal His tag

Buffer: Prior to lyophilization: 100 mM NaHCO₃, 500 mM NaCl, pH 8.3, containing 0.01% Sarcosyl, 5% Trehalose.

Activity: Not tested

Concentration: Prior to lyophilization: 200 µg/ml

Note: THIS PRODUCT IS FOR RESEARCH USE ONLY. NOT FOR USE IN DIAGNOSTIC, THERAPEUTIC OR COSMETIC PROCEDURES. NOT FOR HUMAN OR ANIMAL CONSUMPTION.

For Reference Only