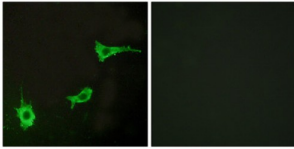


Alpha 1B Adrenergic Receptor (ADRA1B) Antibody

Catalogue No.: abx015217



Immunofluorescence analysis of LOVO cells, using ADRA1B antibody.

Rabbit polyclonal antibody against ADRA1B protein. Immunogen region is C-terminal.

Target:	Alpha 1B Adrenergic Receptor (ADRA1B)
Clonality:	Polyclonal
Reactivity:	Human, Mouse, Rat
Tested Applications:	ELISA, IF/ICC
Host:	Rabbit
Recommended dilutions:	IF/ICC: 1/100 - 1/500, ELISA: 1/20000. Optimal dilutions/concentrations should be determined by the end user.
Conjugation:	Unconjugated
Immunogen:	The antiserum was produced against synthesized peptide derived from C-terminal of human ADRA1B.
Isotype:	IgG
Form:	Liquid
Purification:	Purified from rabbit antiserum by affinity chromatography using epitope-specific immunogen.
Storage:	Aliquot and store at -20°C. Avoid repeated freeze/thaw cycles.
UniProt Primary AC:	P35368 (UniProt , ExpASY)
KEGG:	hsa:147
String:	9606.ENSP00000306662

Datasheet

Version: 2.0.0

Revision date: 01 Sep 2024



Buffer: PBS (without Mg^{2+} and Ca^{2+}), pH 7.4, 150 mM NaCl, 0.02% sodium azide, 50% glycerol.

Concentration: 1 mg/ml

Note: This product is for research use only.

For Reference Only