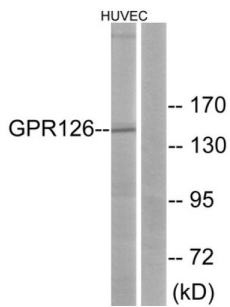


Adhesion G Protein-Coupled Receptor G6 (ADGRG6) Antibody

Catalogue No.: abx015298



Western blot analysis of extracts from HUVEC cells, using GPR126 antibody.

Rabbit polyclonal antibody against ADGRG6 protein. Immunogen region is Internal.

Target:	Adhesion G Protein-Coupled Receptor G6 (ADGRG6)
Clonality:	Polyclonal
Reactivity:	Human
Tested Applications:	ELISA, WB
Host:	Rabbit
Recommended dilutions:	WB: 1/500 - 1/3000, ELISA: 1/5000. Optimal dilutions/concentrations should be determined by the end user.
Conjugation:	Unconjugated
Immunogen:	The antiserum was produced against synthesized peptide derived from internal of human GPR126.
Isotype:	IgG
Form:	Liquid
Purification:	Purified from rabbit antiserum by affinity chromatography using epitope-specific immunogen.
Storage:	Aliquot and store at -20°C. Avoid repeated freeze/thaw cycles.
UniProt Primary AC:	Q86SQ4 (UniProt , ExpASY)
Gene Symbol:	ADGRG6
GeneID:	57211

Datasheet

Version: 2.0.0
Revision date: 03 Dec 2024



OMIM:	606255
HGNC:	13841
KEGG:	hsa:57211
Ensembl:	ENSG00000112414
String:	9606.ENSP00000356581
Buffer:	PBS (without Mg ²⁺ and Ca ²⁺), pH 7.4, 150 mM NaCl, 0.02% sodium azide, 50% glycerol.
Concentration:	1 mg/ml
Note:	This product is for research use only.

For Reference Only