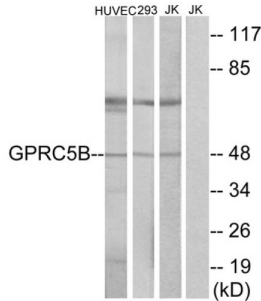
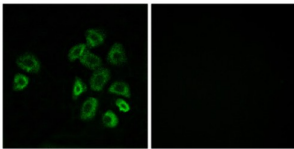


G Protein-Coupled Receptor Class C Group 5 Member B (GPRC5B) Antibody

Catalogue No.: abx015317



Western blot analysis of extracts from HUVEC cells, 293 cells and Jurkat cells, using GPRC5B antibody.



Immunofluorescence analysis of MCF-7 cells, using GPRC5B antibody.

Rabbit polyclonal antibody against GPRC5B protein. Immunogen region is Internal.

- Target:** G Protein-Coupled Receptor Class C Group 5 Member B (GPRC5B)
- Clonality:** Polyclonal
- Reactivity:** Human
- Tested Applications:** ELISA, WB, IF/ICC
- Host:** Rabbit
- Recommended dilutions:** WB: 1/500 - 1/3000, IF/ICC: 1/100 - 1/500, ELISA: 1/1000. Optimal dilutions/concentrations should be determined by the end user.
- Conjugation:** Unconjugated
- Immunogen:** The antiserum was produced against synthesized peptide derived from internal of human GPRC5B.
- Isotype:** IgG
- Form:** Liquid

Datasheet

Version: 3.0.0
Revision date: 25 Nov 2024



Purification: Purified from rabbit antiserum by affinity chromatography using epitope-specific immunogen.

Storage: Aliquot and store at -20°C. Avoid repeated freeze/thaw cycles.

UniProt Primary AC: Q9NZH0 ([UniProt](#), [ExPASy](#))

String: [9606.ENSP00000300571](#)

Buffer: PBS (without Mg²⁺ and Ca²⁺), pH 7.4, 150 mM NaCl, 0.02% sodium azide, 50% glycerol.

Concentration: 1 mg/ml

Note: This product is for research use only.

For Reference Only