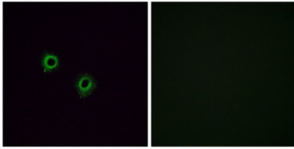


Olfactory Receptor 2J3 (OR2J3) Antibody

Catalogue No.: abx015418



Immunofluorescence analysis of A549 cells, using OR2J3 antibody. The picture on the right is blocked with the synthesized peptide.

Rabbit polyclonal antibody against OR2J3 protein.

Target:	Olfactory Receptor 2J3 (OR2J3)
Clonality:	Polyclonal
Reactivity:	Human
Tested Applications:	ELISA, IF/ICC
Host:	Rabbit
Recommended dilutions:	ELISA: 1/20000, IF/ICC: 1/100 - 1/500. Optimal dilutions/concentrations should be determined by the end user.
Conjugation:	Unconjugated
Immunogen:	The antiserum was produced against synthesized peptide derived from the internal region of human OR2J3.
Isotype:	IgG
Form:	Liquid
Purification:	Purified from rabbit antiserum by affinity chromatography using epitope-specific immunogen.
Storage:	Aliquot and store at -20°C. Avoid repeated freeze/thaw cycles.
UniProt Primary AC:	O76001 (UniProt , ExpASY)
KEGG:	hsa:442186
String:	9606.ENSP00000366374

Datasheet

Version: 3.0.0

Revision date: 27 Mar 2025



Buffer: PBS (without Mg^{2+} and Ca^{2+}), pH 7.4, 150 mM NaCl, 0.02% sodium azide, 50% glycerol.

Specificity: Detects endogenous levels of total OR2J3 protein.

Concentration: 1 mg/ml

Note: THIS PRODUCT IS FOR RESEARCH USE ONLY. NOT FOR USE IN DIAGNOSTIC, THERAPEUTIC OR COSMETIC PROCEDURES. NOT FOR HUMAN OR ANIMAL CONSUMPTION.

For Reference Only