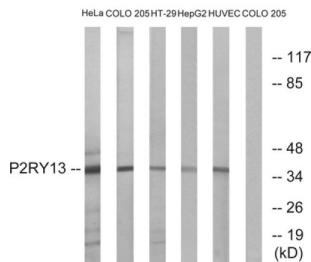


P2Y Purinoceptor 12 (P2RY13) Antibody

Catalogue No.: abx015464



Western blot analysis of extracts from HeLa cells, COLO cells, HT-29 cells, HepG2 cells and HUVEC cells, using P2RY13 antibody.

Rabbit polyclonal antibody against P2RY13 protein. Immunogen region is Internal.

Target:	P2Y Purinoceptor 12 (P2RY13)
Clonality:	Polyclonal
Reactivity:	Human, Rat
Tested Applications:	ELISA, WB
Host:	Rabbit
Recommended dilutions:	WB: 1/500 - 1/3000, ELISA: 1/20000. Optimal dilutions/concentrations should be determined by the end user.
Conjugation:	Unconjugated
Immunogen:	The antiserum was produced against synthesized peptide derived from internal of human P2RY13.
Isotype:	IgG
Form:	Liquid
Purification:	Purified from rabbit antiserum by affinity chromatography using epitope-specific immunogen.
Storage:	Aliquot and store at -20°C. Avoid repeated freeze/thaw cycles.
UniProt Primary AC:	Q9BPV8 (UniProt , ExPASy)
String:	9606.ENSP00000320376
Buffer:	PBS (without Mg ²⁺ and Ca ²⁺), pH 7.4, 150 mM NaCl, 0.02% sodium azide, 50% glycerol.

Datasheet

Version: 2.0.0

Revision date: 02 Dec 2024



Concentration: 1 mg/ml

Note: This product is for research use only.

For Reference Only