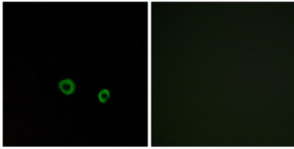


## Taste 2 Receptor Member 10 (TAS2R10) Antibody

Catalogue No.: abx015481



Western blot analysis of extracts from LOVO cells, using TAS2R10 antibody.

Rabbit polyclonal antibody against TAS2R10 protein. Immunogen region is Internal.

<b>Target:</b>	Taste 2 Receptor Member 10 (TAS2R10)
<b>Clonality:</b>	Polyclonal
<b>Reactivity:</b>	Human
<b>Tested Applications:</b>	ELISA, WB, IF/ICC
<b>Host:</b>	Rabbit
<b>Recommended dilutions:</b>	WB: 1/500 - 1/3000, IF/ICC: 1/100 - 1/500, ELISA: 1/10000. Optimal dilutions/concentrations should be determined by the end user.
<b>Conjugation:</b>	Unconjugated
<b>Immunogen:</b>	The antiserum was produced against synthesized peptide derived from internal of human TAS2R10.
<b>Isotype:</b>	IgG
<b>Form:</b>	Liquid
<b>Purification:</b>	Purified from rabbit antiserum by affinity chromatography using epitope-specific immunogen.
<b>Storage:</b>	Aliquot and store at -20°C. Avoid repeated freeze/thaw cycles.
<b>UniProt Primary AC:</b>	Q9NYW0 ( <a href="#">UniProt</a> , <a href="#">ExpASY</a> )
<b>String:</b>	<a href="#">9606.ENSP00000240619</a>
<b>Buffer:</b>	PBS (without Mg <sup>2+</sup> and Ca <sup>2+</sup> ), pH 7.4, 150 mM NaCl, 0.02% sodium azide, 50% glycerol.

# Datasheet

Version: 2.0.0

Revision date: 02 Dec 2024



**Concentration:** 1 mg/ml

**Note:** This product is for research use only.

For Reference Only