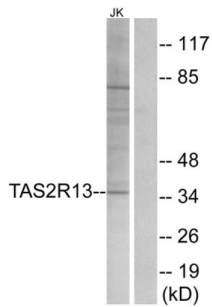
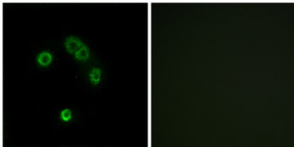


## Taste 2 Receptor Member 13 (TAS2R13) Antibody

Catalogue No.: abx015482



Western blot analysis of extracts from Jurkat cells, using TAS2R13 antibody.



Immunofluorescence analysis of MCF-7 cells, using TAS2R13 antibody.

Rabbit polyclonal antibody against TAS2R13 protein. Immunogen region is Internal.

**Target:** Taste 2 Receptor Member 13 (TAS2R13)

**Clonality:** Polyclonal

**Reactivity:** Human

**Tested Applications:** ELISA, WB, IF/ICC

**Host:** Rabbit

**Recommended dilutions:** WB: 1/500 - 1/3000, IF/ICC: 1/100 - 1/500, ELISA: 1/10000. Optimal dilutions/concentrations should be determined by the end user.

**Conjugation:** Unconjugated

**Immunogen:** The antiserum was produced against synthesized peptide derived from internal of human TAS2R13.

**Isotype:** IgG

**Form:** Liquid

**Purification:** Purified from rabbit antiserum by affinity chromatography using epitope-specific immunogen.

# Datasheet

Version: 2.0.0

Revision date: 02 Dec 2024



**Storage:** Aliquot and store at -20°C. Avoid repeated freeze/thaw cycles.

**UniProt Primary AC:** Q9NYV9 ([UniProt](#), [ExPASy](#))

**String:** [9606.ENSP00000375095](#)

**Buffer:** PBS (without Mg<sup>2+</sup> and Ca<sup>2+</sup>), pH 7.4, 150 mM NaCl, 0.02% sodium azide, 50% glycerol.

**Concentration:** 1 mg/ml

**Note:** This product is for research use only.

For Reference Only