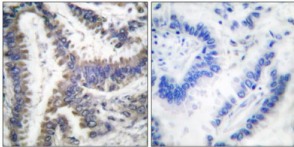


DNA Fragmentation Factor 45 kDa Subunit Cleaved-Asp224 (DFF45 Cleaved-D224) Antibody

Catalogue No.: abx015539



Immunohistochemical analysis of paraffin-embedded human lung carcinoma tissue, using DFF45 (Cleaved-Asp224) antibody.

Rabbit polyclonal antibody against DFF45 protein. Immunogen region is Internal. Specificity is as follows for the reactive species: H:D224.

Target:	DNA Fragmentation Factor 45 kDa Subunit Cleaved-Asp224 (DFF45 Cleaved-D224)
Clonality:	Polyclonal
Target Modification:	Asp224
Modification:	Cleaved
Reactivity:	Human
Tested Applications:	IHC
Host:	Rabbit
Recommended dilutions:	Optimal dilutions/concentrations should be determined by the end user.
Conjugation:	Unconjugated
Immunogen:	The antiserum was produced against synthesized peptide derived from Internal of human DFF45 (Cleaved-Asp224).
Isotype:	IgG
Form:	Liquid
Purification:	Purified from rabbit antiserum by affinity chromatography using epitope-specific immunogen.
Storage:	Aliquot and store at -20°C. Avoid repeated freeze/thaw cycles.

Datasheet

Version: 3.0.0
Revision date: 15 Jan 2025



UniProt Primary AC: O00273 ([UniProt](#), [ExpASY](#))

KEGG: hsa:1676

String: [9606.ENSP00000366237](#)

Sequence: CGEEVDAVD

Buffer: PBS (without Mg²⁺ and Ca²⁺), pH 7.4, 150 mM NaCl, 0.02% sodium azide, 50% glycerol.

Concentration: 1 mg/ml

Note: This product is for research use only.

For Reference Only