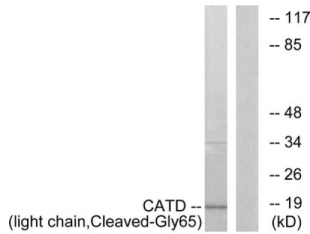


# Cathepsin D Cleaved-Gly65 Light Chain (CTSD Cleaved-Gly65) Antibody

Catalogue No.: abx015565



Western blot analysis of extracts from COS-7 cells, treated with etoposide (25uMl, 1hour), using CATD (light chain, Cleaved-Gly65) antibody.

Rabbit polyclonal antibody against CATD protein. Immunogen region is Internal. Specificity is as follows for the reactive species: H:G65.

<b>Target:</b>	Cathepsin D Cleaved-Gly65 Light Chain (CTSD Cleaved-Gly65)
<b>Clonality:</b>	Polyclonal
<b>Target Modification:</b>	Gly65
<b>Modification:</b>	Cleaved
<b>Reactivity:</b>	Human
<b>Tested Applications:</b>	ELISA, WB
<b>Host:</b>	Rabbit
<b>Recommended dilutions:</b>	WB: 1/500 - 1/3000, ELISA: 1/20000. Optimal dilutions/concentrations should be determined by the end user.
<b>Conjugation:</b>	Unconjugated
<b>Immunogen:</b>	The antiserum was produced against synthesized peptide derived from internal of human Cathepsin D AND light chain.
<b>Isotype:</b>	IgG
<b>Form:</b>	Liquid
<b>Purification:</b>	Purified from rabbit antiserum by affinity chromatography using epitope-specific immunogen.
<b>Storage:</b>	Aliquot and store at -20°C. Avoid repeated freeze/thaw cycles.

# Datasheet

Version: 3.0.0

Revision date: 26 Mar 2025



**UniProt Primary AC:** P07339 ([UniProt](#), [ExPASy](#))

**KEGG:** hsa:1509

**String:** [9606.ENSP00000236671](#)

**Enzyme Commission Number:** EC 3.4.23.5

**Buffer:** PBS (without  $Mg^{2+}$  and  $Ca^{2+}$ ), pH 7.4, 150 mM NaCl, 0.02% sodium azide, 50% glycerol.

**Concentration:** 1 mg/ml

**Note:** THIS PRODUCT IS FOR RESEARCH USE ONLY. NOT FOR USE IN DIAGNOSTIC, THERAPEUTIC OR COSMETIC PROCEDURES. NOT FOR HUMAN OR ANIMAL CONSUMPTION.

For Reference Only