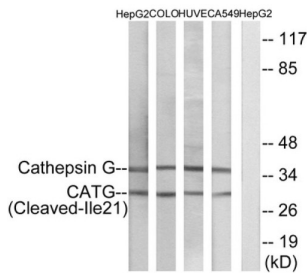


Cathepsin G Cleaved-Ile21 (CTSG Cleaved-Ile21) Antibody

Catalogue No.: abx015567



Western blot analysis of extracts from HepG2 cells, COLO cells, HUVEC cells and A549 cells, using CATG (Cleaved-Ile21) antibody.

Rabbit polyclonal antibody against CATG (Cleaved-Ile21) protein. Immunogen region is N-terminal.

Target:	Cathepsin G Cleaved-Ile21 (CTSG Cleaved-Ile21)
Clonality:	Polyclonal
Target Modification:	Ile21
Modification:	Cleaved
Reactivity:	Human, Mouse, Rat
Tested Applications:	ELISA, WB
Host:	Rabbit
Recommended dilutions:	ELISA: 1/20000, WB: 1/500 - 1/3000. Optimal dilutions/concentrations should be determined by the end user.
Conjugation:	Unconjugated
Immunogen:	The antiserum was produced against synthesized peptide derived from human CATG.
Isotype:	IgG
Form:	Liquid
Purification:	Purified from rabbit antiserum by affinity chromatography using epitope-specific immunogen.
Storage:	Aliquot and store at -20°C. Avoid repeated freeze/thaw cycles.
UniProt Primary AC:	P08311 (UniProt , ExPASy)

Datasheet

Version: 4.0.0
Revision date: 11 Apr 2025



KEGG: hsa:1511

String: [9606.ENSP00000216336](#)

Enzyme Commission Number: EC 3.4.21.20

Buffer: PBS (without Mg²⁺ and Ca²⁺), pH 7.4, 150 mM NaCl, 0.02% sodium azide, 50% glycerol.

Specificity: Detects endogenous levels of fragments of activated CATG resulting from cleavage adjacent to Ile21.

Concentration: 1 mg/ml

Note: THIS PRODUCT IS FOR RESEARCH USE ONLY. NOT FOR USE IN DIAGNOSTIC, THERAPEUTIC OR COSMETIC PROCEDURES. NOT FOR HUMAN OR ANIMAL CONSUMPTION.

For Reference Only