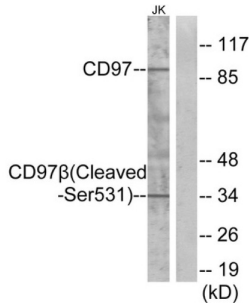


# CD97 Antigen Subunit Beta Cleaved-Ser531 (ADGRE5 Cleaved-S531) Antibody

Catalogue No.: abx015572



Rabbit polyclonal antibody against CD97 beta protein. Immunogen region is Internal. Specificity is as follows for the reactive species: H:S531.

<b>Target:</b>	CD97 Antigen Subunit Beta Cleaved-Ser531 (ADGRE5 Cleaved-S531)
<b>Clonality:</b>	Polyclonal
<b>Target Modification:</b>	Ser531
<b>Modification:</b>	Cleaved
<b>Reactivity:</b>	Human
<b>Tested Applications:</b>	ELISA, WB
<b>Host:</b>	Rabbit
<b>Recommended dilutions:</b>	WB: 1/500 - 1/3000, ELISA: 1/5000. Optimal dilutions/concentrations should be determined by the end user.
<b>Conjugation:</b>	Unconjugated
<b>Immunogen:</b>	The antiserum was produced against synthesized peptide derived from internal of human CD97 beta.
<b>Isotype:</b>	IgG
<b>Form:</b>	Liquid
<b>Purification:</b>	Purified from rabbit antiserum by affinity chromatography using epitope-specific immunogen.
<b>Storage:</b>	Aliquot and store at -20°C. Avoid repeated freeze/thaw cycles.

# Datasheet

Version: 1.0.0  
Revision date: 21 Nov 2024



**UniProt Primary AC:** P48960 ([UniProt](#), [ExpASY](#))

**KEGG:** hsa:976

**String:** [9606.ENSP00000242786](#)

**Buffer:** PBS (without  $Mg^{2+}$  and  $Ca^{2+}$ ), pH 7.4, 150 mM NaCl, 0.02% sodium azide, 50% glycerol.

**Concentration:** 1 mg/ml

**Note:** This product is for research use only.

For Reference Only