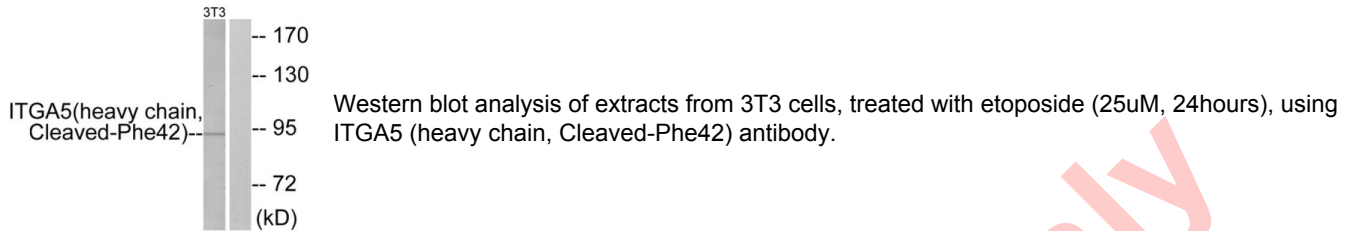


Integrin Alpha 5 Cleaved-Phe42 Heavy Chain (ITGA5 (Cleaved-F42)) Antibody

Catalogue No.: abx015590



Rabbit polyclonal antibody against ITGA5 protein. Immunogen region is N-terminal. Specificity is as follows for the reactive species: H:F42, M:F45.

Target:	Integrin Alpha 5 Cleaved-Phe42 Heavy Chain (ITGA5 (Cleaved-F42))
Clonality:	Polyclonal
Target Modification:	Phe42
Modification:	Cleaved
Reactivity:	Human, Mouse
Tested Applications:	ELISA, WB
Host:	Rabbit
Recommended dilutions:	WB: 1/500 - 1/3000, ELISA: 1/10000. Optimal dilutions/concentrations should be determined by the end user.
Conjugation:	Unconjugated
Immunogen:	The antiserum was produced against synthesized peptide derived from N-terminal of human ITGA5.
Isotype:	IgG
Form:	Liquid
Purification:	Purified from rabbit antiserum by affinity chromatography using epitope-specific immunogen.
Storage:	Aliquot and store at -20°C. Avoid repeated freeze/thaw cycles.

Datasheet

Version: 2.0.0

Revision date: 28 Mar 2025



UniProt Primary AC: P08648 ([UniProt](#), [ExPASy](#))

KEGG: hsa:3678

String: [9606.ENSP00000293379](#)

Buffer: PBS (without Mg²⁺ and Ca²⁺), pH 7.4, 150 mM NaCl, 0.02% sodium azide, 50% glycerol.

Concentration: 1 mg/ml

Note: THIS PRODUCT IS FOR RESEARCH USE ONLY. NOT FOR USE IN DIAGNOSTIC, THERAPEUTIC OR COSMETIC PROCEDURES. NOT FOR HUMAN OR ANIMAL CONSUMPTION.

For Reference Only